



EDA:

Results-driven Performance



United States Department of Commerce

Economic Development Administration

Fiscal Year 2021

Congressional Budget Request

February 10, 2020

[THIS PAGE INTENTIONALLY LEFT BLANK]

**DEPARTMENT OF COMMERCE
ECONOMIC DEVELOPMENT ADMINISTRATION
Budget Estimates, Fiscal Year 2021
Congressional Submission
Table Of Contents**

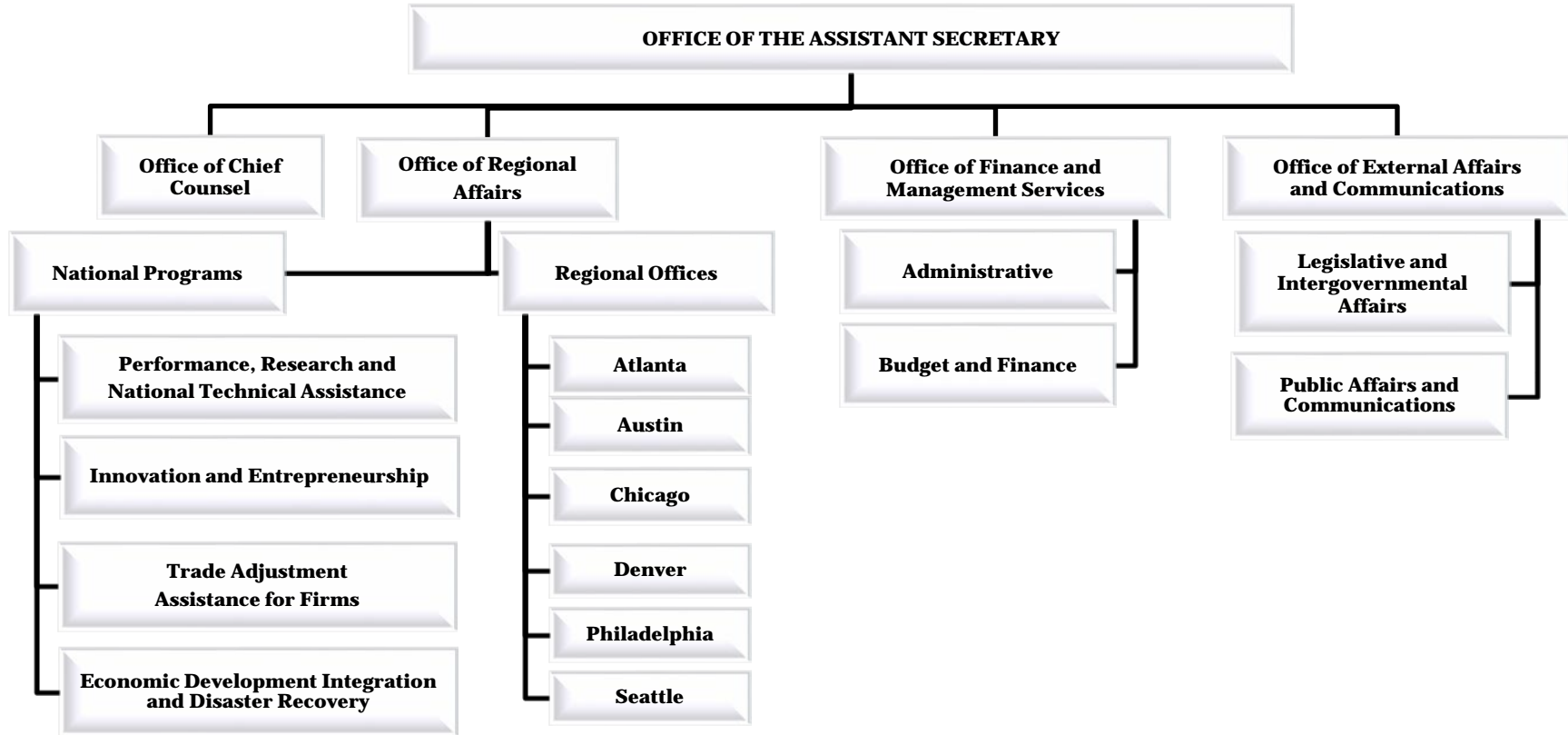
<u>Exhibit Number</u>	<u>Exhibit</u>	<u>Page Number</u>
2	Organization Chart	EDA-5
3	Executive Summary	EDA-7
3T	Transfer Change Detail by Object Class	EDA-9
4A	Program Increases / Decreases / Terminations	EDA-11
4T	FY 2021 Transfer Summary Table	EDA-13
<u>Grant Programs</u>		
5	Summary of Resource Requirements: Direct Obligations	EDA-15
6	Summary of Reimbursable Obligations	EDA-17
7	Summary of Financing	EDA-19
<u>Public Works</u>		
10	Program and Performance: Direct Obligations	EDA-21
12	Justification of Program and Performance (Public Works)	EDA-23
13	Program Change for 2021	EDA-25
<u>Partnership Planning</u>		
10	Program and Performance: Direct Obligations	EDA-27
12	Justification of Program and Performance (Partnership Planning)	EDA-29
13	Program Change for 2021	EDA-31
<u>Technical Assistance</u>		
10	Program and Performance: Direct Obligations	EDA-33
12	Justification of Program and Performance (Technical Assistance)	EDA-35
13	Program Change for 2021	EDA-37
<u>Research and Evaluation</u>		
10	Program and Performance: Direct Obligations	EDA-39
12	Justification of Program and Performance (Research and Evaluation)	EDA-41
13	Program Change for 2021	EDA-43

<u>Exhibit Number</u>	<u>Exhibit</u>	<u>Page Number</u>
Trade Adjustment Assistance		
10	Program and Performance: Direct Obligations	EDA-45
12	Justification of Program and Performance (Trade Adjustment Assistance)	EDA-47
13	Program Change for 2021	EDA-49
Economic Adjustment Assistance		
10	Program and Performance: Direct Obligations	EDA-51
12	Justification of Program and Performance (Economic Adjustment Assistance)	EDA-53
13	Program Change for 2021	EDA-55
Assistance to Coal Communities		
10	Program and Performance: Direct Obligations	EDA-57
12	Justification of Program and Performance (Assistance to Coal Communities)	EDA-59
13	Program Change for 2021	EDA-61
Assistance to Nuclear Closure Communities		
10	Program and Performance: Direct Obligations	EDA-63
12	Justification of Program and Performance (Assistance to Nuclear Closure Communities)	EDA-65
13	Program Change for 2021	EDA-67
Regional Innovation		
10	Program and Performance: Direct Obligations	EDA-69
12	Justification of Program and Performance (Regional Innovation)	EDA-71
13	Program Change for 2021	EDA-73
Science Technology Engineering and Mathematics Apprenticeship Pilot Program		
10	Program and Performance: Direct Obligations	EDA-75
12	Justification of Program and Performance (STEM Apprenticeship Pilot Program)	EDA-77
13	Program Change for 2021	EDA-79
Program Summary Exhibits		
16	Summary of Requirements by Object Class	EDA-81
32	Justification of Proposed Language Changes	EDA-83
33	Appropriation Language and Code Citations	EDA-85

<u>Exhibit Number</u>	<u>Exhibit</u>	<u>Page Number</u>
	<u>Salaries and Expenses</u>	
	Summary of Resource Requirements: Direct Obligations	EDA-87
	Summary of Reimbursable Obligations	EDA-89
	Summary of Financing	EDA-91
	Adjustments-to-Base	EDA-93
	 Operations and Administration (1-year)	
	Program and Performance: Direct Obligations	EDA-95
	Program and Performance: Reimbursable Obligations	EDA-97
	Justification of Program and Performance (by Subactivity)	EDA-99
	 Program Change for 2021	EDA-103
	Program Change Personnel Detail	EDA-107
	Program Change Detail by Object Class	EDA-109
	Summary of Requirements by Object Class	EDA-111
	 Operations and Administration (no-year)	
	Program and Performance: Direct Obligations	EDA-113
	Summary of Requirements by Object Class	EDA-115
	 Summary Exhibits	
	Justification of Proposed Language Changes	EDA-117
	Appropriations Language and Code Citation	EDA-119
	Periodicals, Pamphlets, and Audiovisual Services	EDA-121
	Average Grade and Salaries	EDA-123
	Implementation Status of GAO and OIG Recommendations	EDA-125
	 Annual Performance Plan	
	Summary of Goals, Objectives, and Performance Measures	EDA-127

[THIS PAGE INTENTIONALLY LEFT BLANK]

Department of Commerce
Economic Development Administration



[THIS PAGE INTENTIONALLY LEFT BLANK]

**Department of Commerce
Economic Development Administration
Budget Estimates, Fiscal Year 2021
Executive Summary**

The Administration's 2021 Budget builds on the President's commitment to advance the vision of a Federal Government that spends taxpayer dollars more efficiently and effectively and to provide necessary services in support of key National priorities while reducing deficits. It also identifies the savings and efficiencies needed to keep the Nation on a responsible fiscal path. The Administration has made the necessary tradeoffs and choices inherent in pursuing these goals. This means changing the role and size of the Federal Government and prioritizing the programs that provide a good return for the taxpayer, as well as those that serve the most critical functions, while consolidating or eliminating duplicative, ineffective or less critical programs. Many difficult decisions were necessary to reach the funding level provided in this budget, and the elimination of the Economic Development Administration (EDA) is one of them.

In support of these goals, the EDA 2021 budget requests program decreases to provide offsets to rebuild the military and make critical investments in the Nation's security. This budget requests \$31.6 million to cover the costs associated with the first year of closing down the agency.

In light of this proposal to continue closing down EDA, the Administration is also including in the general provisions for the Department of Commerce specific language to allow for the defederalization of its Revolving Loan Fund grants. This language is necessary for the orderly close down of EDA's operations. Without the authority, EDA or any successor operating unit within the Department, would have to administer and monitor these grants in perpetuity because the federal interest in this type of grant does not end. This is a change to EDA's authorizing statute that the Department would pursue even if EDA were not eliminated in order to reduce costly grantee reporting requirements and burdensome agency oversight on successful Revolving Loan Funds that have demonstrated a strong track record of compliance and effectiveness.

Performance:

The effectiveness of EDA investments is assessed using numerous internal and external performance measures including the Government Performance and Results Act (GPRA) goals. These efforts have been institutionalized in EDA operations to maintain quality control and use objective methods to assess EDA performance. For current GPRA targets please see the 2021/2019 Annual Performance Plan and Report.

Adjustments:

Inflationary Adjustments

EDA's 2021 Base includes a total of \$2,801,385 and 0 FTE/ 0 positions to fully fund required inflationary adjustments to current EDA activities. This adjustment includes the actual cost increases incurred in FY 2019 and inflationary increases to the FY 2020 budget request for labor and non-labor activities, including benefits, service contracts, utilities, field office lease payments, and rent charges from the General Services Administration (GSA). In FY 2019, EDA's rent increased by \$213,000 and there was an additional \$1,050,000 in contractual costs and charges under inter-agency agreements for shared services. These changes and the inflationary increases from FY 2020 to FY 2021 of \$1,538,385 are reflected in Exhibit 9 of this document.

Technical Transfer

The Department of Commerce (DOC) is proposing to transfer nine projects and funding out of the Working Capital Fund and the Advances and Reimbursable account to the Departmental Management Salaries and Expense account as part of its annual review to properly align and account programs and costs. This transfer executes the EDA's portion of the DOC transfer. For more information regarding the specific projects and funding transfers for the Department of Commerce please refer to Exhibit 3 of the Departmental Management FY 2021 Congressional Justification Budget.

**Department of Commerce
Economic Development Administration
Salaries and Expenses
TRANSFER CHANGE DETAIL BY OBJECT CLASS
(Direct Obligations amounts in thousands)**

Activity: Salary & Expenses
EDA Salaries and Expenses (1-year) transfer to
Subactivity: Departmental Management Salaries and Expenses account

Object Class		2020 Enacted	2021 Transfer	2021 Base
11.1	Full-time permanent compensation	0	0	0
11.3	Other than full-time permanent	0	0	0
11.5	Other personnel compensation	0	0	0
11.8	Special personnel services payments	0	0	0
11.9	Total personnel compensation	0	0	0
12	Civilian personnel benefits	0	0	0
13	Benefits for former personnel	0	0	0
21	Travel and transportation of persons	0	0	0
22	Transportation of things	0	0	0
23	Rent, communications, and utilities	0	0	0
23.1	Rental payments to GSA	0	0	0
23.2	Rental Payments to others	0	0	0
23.3	Communications, utilities and misc charges	0	0	0
24	Printing and reproduction	0	0	0
25.1	Advisory and assistance services	0	0	0
25.2	Other services from non-Federal sources	0	0	0
25.3	Other goods and services from Federal sources	0	(0.183)	(0.183)
25.4	Operation and maintenance of facilities	0	0	0
25.5	Research and development contracts	0	0	0
25.6	Medical care	0	0	0
25.7	Operation and maintenance of equipment	0	0	0
25.8	Subsistence and support of persons	0	0	0
26	Supplies and materials	0	0	0
31	Equipment	0	0	0
41	Grants, subsidies and contributions	0	0	0
99	Total obligations	0	(0.183)	(0.183)

[THIS PAGE INTENTIONALLY LEFT BLANK]

**Department of Commerce
Economic Development Administration
FY 2021 PROGRAM INCREASES / DECREASES / TERMINATIONS**
(Dollar amounts in thousands)
(By Appropriation, Largest to Smallest)

Increases

Page No in CJ	Appropriation	Budget Program	Activity/Subactivity	Positions	Budget Authority
	Not Applicable			0	0
Subtotal, Increases				0	0

Decreases

Page No in CJ	Appropriation	Budget Program	Activity/Subactivity	Positions	Budget Authority
EDA-103	Salaries and Expenses (1-Year)	Operations and Administration		(106)	(11,525)
Subtotal, Decreases				(106)	(11,525)

Terminations

Page No in CJ	Appropriation	Budget Program	Activity/Subactivity	Positions	Budget Authority
EDA-43	Economic Development Assistance Programs	Research and Evaluation		0	(1,500)
EDA-79	Economic Development Assistance Programs	STEM Apprenticeship Pilot Program		0	(2,000)
EDA-37	Economic Development Assistance Programs	Technical Assistance		0	(9,500)
EDA-49	Economic Development Assistance Programs	Trade Adjustment Assistance		0	(13,000)
EDA-67	Economic Development Assistance Programs	Assistance to Nuclear Closure Communities		0	(15,000)
EDA-61	Economic Development Assistance Programs	Assistance to Coal Communities		0	(30,000)
EDA-73	Economic Development Assistance Programs	Regional Innovation		0	(33,000)
EDA-31	Economic Development Assistance Programs	Partnership Planning		0	(33,000)
EDA-55	Economic Development Assistance Programs	Economic Adjustment Assistance		0	(37,000)
EDA-25	Economic Development Assistance Programs	Public Works		0	(118,500)
Subtotal, Terminations				0	(292,500)
Total, Increases, Decreases and Terminations				(106)	(304,025)

[THIS PAGE INTENTIONALLY LEFT BLANK]

Department of Commerce
Economic Development Administration
FY 2021 TRANSFER SUMMARY TABLE
(Dollar amounts in thousands)
(Grouped by Title of Transfer, Largest to Smallest)

Page In CJ	Budget Program	Appropriations	Title of Transfer	Positions	Budget Authority
EDA-9	EDA	Salaries & Expenses	Transfer to Department Management Salaries and Expenses account)	0	(183)
		Total, Transfers		0	0

[THIS PAGE INTENTIONALLY LEFT BLANK]

**Department of Commerce
Economic Development Administration
Economic Development Assistance Programs
SUMMARY OF RESOURCE REQUIREMENTS
(Dollar amounts in thousands)**

	<u>Positions</u>	<u>FTE</u>	<u>Budget Authority</u>	<u>Direct Obligations</u>
Appropriation Available, 2020	0	0	0	780,388
2021 Adjustments to base:				
<i>Less: Estimated recoveries, 2021</i>			(33,203)	(33,203)
2021 Base	0	0	(33,203)	747,185
<i>Plus: 2021 Program changes</i>	0	0	0	(543,388)
2021 Estimate	0	0	(33,203)	203,797

Comparison by activity / subactivity with totals by activity			2019		2020		2021		2021		Increase/Decrease	
			Actual		Enacted		Base		Estimate		over 2021 Base	
			Personnel	Amount	Personnel	Amount	Personnel	Amount	Personnel	Amount	Personnel	Amount
EDA-21	Public Works	Pos./BA	0	117,500	0	118,500	0	118,500	0	0	0	(118,500)
		FTE/Obl.	0	125,153	0	125,000	0	125,000	0	0	0	(125,000)
EDA-27	Partnership Planning	Pos./BA	0	33,000	0	33,000	0	33,000	0	0	0	(33,000)
		FTE/Obl.	0	33,455	0	33,000	0	33,000	0	0	0	(33,000)
EDA-33	Technical Assistance	Pos./BA	0	9,500	0	9,500	0	9,500	0	0	0	(9,500)
		FTE/Obl.	0	9,964	0	10,200	0	10,200	0	0	0	(10,200)
EDA-39	Research and Evaluation	Pos./BA	0	1,500	0	1,500	0	1,500	0	0	0	(1,500)
		FTE/Obl.	0	2,173	0	1,565	0	1,565	0	0	0	(1,565)
EDA-45	Trade Adjustment Assistance	Pos./BA	0	13,000	0	13,000	0	13,000	0	0	0	(13,000)
		FTE/Obl.	0	13,000	0	13,000	0	13,000	0	0	0	(13,000)
EDA-51	Economic Adjustment Assistance	Pos./BA	0	37,000	0	37,000	0	37,000	0	0	0	(37,000)
		FTE/Obl.	0	42,418	0	41,346	0	41,346	0	0	0	(41,346)

Comparison by activity / subactivity with totals by activity			2019		2020		2021		2021		Increase/Decrease	
			Actual		Enacted		Base		Estimate		over 2021 Base	
			Personnel	Amount	Personnel	Amount	Personnel	Amount	Personnel	Amount	Personnel	Amount
EDA-57	Assistance to Coal Communities	Pos./BA	0	30,000	0	30,000	0	30,000	0	0	0	(30,000)
		FTE/Obl.	0	31,955	0	31,200	0	31,200	0	0	0	(31,200)
EDA-61	Assistance to Nuclear Closure Communities	Pos./BA	0	0	0	15,000	0	15,000	0	0	0	(15,000)
		FTE/Obl.	0	0	0	15,000	0	15,000	0	0	0	(15,000)
EDA-69	Regional Innovation	Pos./BA	0	23,500	0	33,000	0	33,000	0	0	0	(33,000)
		FTE/Obl.	0	44,226	0	33,692	0	33,692	0	0	0	(33,692)
EDA-75	STEM Apprenticeship Pilot Program	Pos./BA	0	0	0	2,000	0	2,000	0	0	0	(2,000)
		FTE/Obl.	0	0	0	2,000	0	2,000	0	0	0	(2,000)
	Additional Supplemental Appropriations for Disaster Relief Act, 2019	Pos./BA	0	600,000	0	0	0	0	0	0	0	0
		FTE/Obl.	0	0	0	350,000	0	350,000	0	237,000	0	(113,000)
	Disaster Supplemental Appropriations Act, 2018	Pos./BA	0	0	0	0	0	0	0	0	0	0
		FTE/Obl.	0	347,908	0	124,385	0	124,385	0	0	0	(124,385)
	Disaster Assistance, 2012	Pos./BA	0	0	0	0	0	0	0	0	0	0
		FTE/Obl.	0	799	0	0	0	0	0	0	0	0
	Other Prior Year Disaster Supplementals	Pos./BA	0	0	0	0	0	0	0	0	0	0
		FTE/Obl.	0	633	0	0	0	0	0	0	0	0
	Total	Pos./BA	0	865,000	0	292,500	0	292,500	0	0	0	(292,500)
		FTE/Obl.	0	651,684	0	780,388	0	780,388	0	237,000	0	(543,388)
Adjustments for												
	Recoveries ^{/1}			(21,509)		(20,870)		(20,870)		(33,203)		(12,333)
	Unobligated balance, start of year ^{/1}			(529,408)		(745,515)		(745,515)		(250,297)		495,218
	Unobligated balance transferred			6,218		11,200		11,200		6,000		(5,200)
	Unobligated balance, end of year ^{/1}			745,515		250,297		250,297		2,500		(247,797)
	Rescission or cancellation of unobligated balances ^{/2}			10,000		17,000		17,000		38,000		21,000
Financing from transfers:												
	Transfer from other accounts (-)			0		0		0		0		0
	Transfer to other accounts (+) ^{/1}			2,500		0		0		0		0
	Appropriation			865,000		292,500		292,500		0		(292,500)

/1 Amounts include both disaster and non-disaster funding.

/2 Rescission or proposed cancellation amounts are non-disaster funding only.

**Department of Commerce
Economic Development Administration
Economic Development Assistance Programs
SUMMARY OF REIMBURSABLE OBLIGATIONS
(Dollar amounts in thousands)**

Comparison by activity		2019		2020		2021		2021		Increase/Decrease	
		Actual		Enacted		Base		Estimate		from 2021 Base	
		Personnel	Amount	Personnel	Amount	Personnel	Amount	Personnel	Amount	Personnel	Amount
Public Works	Pos./BA	0	0	0	0	0	0	0	0	0	0
	FTE/Obl.	0	0	0	0	0	0	0	0	0	0
Partnership Planning	Pos./BA	0	0	0	0	0	0	0	0	0	0
	FTE/Obl.	0	0	0	0	0	0	0	0	0	0
Technical Assistance	Pos./BA	0	0	0	0	0	0	0	0	0	0
	FTE/Obl.	0	0	0	0	0	0	0	0	0	0
Research & Evaluation	Pos./BA	0	0	0	0	0	0	0	0	0	0
	FTE/Obl.	0	0	0	0	0	0	0	0	0	0
Trade Adjustment Assistance	Pos./BA	0	0	0	0	0	0	0	0	0	0
	FTE/Obl.	0	0	0	0	0	0	0	0	0	0
Economic Adjustment Assistance	Pos./BA	0	0	0	0	0	0	0	0	0	0
	FTE/Obl.	0	0	0	0	0	0	0	0	0	0
Assistance to Coal Communities	Pos./BA	0	0	0	0	0	0	0	0	0	0
	FTE/Obl.	0	0	0	0	0	0	0	0	0	0
Assistance to Nuclear Closure Communities	Pos./BA	0	0	0	0	0	0	0	0	0	0
	FTE/Obl.	0	0	0	0	0	0	0	0	0	0
Regional Innovation	Pos./BA	0	0	0	0	0	0	0	0	0	0
	FTE/Obl.	0	0	0	0	0	0	0	0	0	0
STEM Apprenticeship Pilot Program	Pos./BA	0	0	0	0	0	0	0	0	0	0
	FTE/Obl.	0	0	0	0	0	0	0	0	0	0
Disaster Recovery Assistance	Pos./BA	0	0	0	0	0	0	0	0	0	0
	FTE/Obl.	0	0	0	0	0	0	0	0	0	0
Total	Pos./BA	0	0	0	0	0	0	0	0	0	0
	FTE/Obl.	0	0	0	0	0	0	0	0	0	0

[THIS PAGE INTENTIONALLY LEFT BLANK]

**Department of Commerce
Economic Development Administration
Economic Development Assistance Programs
SUMMARY OF FINANCING
(Dollar amounts in thousands)**

	Actual	Enacted	Base	Estimate	from 2021 Base
Total Obligations	651,684	780,388	780,388	237,000	(543,388)
Offsetting collections from:					
Federal funds	0	0	0	0	0
Trust funds	0	0	0	0	0
Non-Federal sources	0	0	0	0	0
Recoveries ^{/1}	(21,509)	(20,870)	(20,870)	(33,203)	(12,333)
Unobligated balance, start of year ^{/1}	(529,408)	(745,515)	(745,515)	(250,297)	495,218
Unobligated balance, transferred	6,218	11,200	11,200	6,000	(5,200)
Unobligated balance, end of year ^{/1}	745,515	250,297	250,297	2,500	(247,797)
Rescission or cancellation of unobligated balances ^{/2}	10,000	17,000	17,000	38,000	21,000
Budget Authority	862,500	292,500	292,500	0	(292,500)
Financing:					
Transfer from other accounts (-)	0	0	0	0	0
Transfer to other accounts (+) ^{/1}	2,500	0	0	0	0
Appropriation	865,000	292,500	292,500	0	(292,500)

^{/1} Amounts include both disaster and non-disaster funding.

^{/2} Rescission or proposed cancellation amounts are non-disaster funding only.

[THIS PAGE INTENTIONALLY LEFT BLANK]

**Department of Commerce
Economic Development Administration
Economic Development Assistance Programs
PROGRAM AND PERFORMANCE: DIRECT OBLIGATIONS
(Dollar amounts in thousands)**

Activity: Public Works

Line Item		2019		2020		2021		2021		Increase/Decrease	
		Actual		Enacted		Base		Estimate		from 2021 Base	
		Personnel	Amount	Personnel	Amount	Personnel	Amount	Personnel	Amount	Personnel	Amount
Grants	Pos./BA	0	117,500	0	118,500	0	118,500	0	0	0	(118,500)
	FTE/Obl	0	125,153	0	125,000	0	125,000	0	0	0	(125,000)
Total	Pos./BA	0	117,500	0	118,500	0	118,500	0	0	0	(118,500)
	FTE/Obl	0	125,153	0	125,000	0	125,000	0	0	0	(125,000)

[THIS PAGE INTENTIONALLY LEFT BLANK]

**Department of Commerce
Economic Development Administration
Economic Development Assistance Programs
JUSTIFICATION OF PROGRAM AND PERFORMANCE
(Dollar amounts in thousands)**

Activity: Public Works

Goal Statement

The Administration is not requesting funding for EDA's grant programs including the Public Works Program.

Base Program

Through the Public Works Program, EDA made strategic co-investments to help communities build or expand access to the infrastructure assets that are the building blocks of an economy. These assets supported the growth and economic development of distressed regions. EDA's Public Works Program invested in traditional infrastructure through this program including water and sewer system improvements, industrial parks, business incubator facilities, expansion of port and harbor facilities, skill-training facilities, and the redevelopment of brownfields. In addition, EDA provided investments to help facilitate the transition of distressed communities to become competitive in the worldwide economy. This was accomplished through the development of key public infrastructure such as technology-based facilities; broadband infrastructure; research and development commercialization centers; facilities for workforce development; wet labs; multi-tenant manufacturing facilities; research, business and science parks; and telecommunications infrastructure and development facilities.

The program's authorizing statute is the Public Works and Economic Development Act (PWEDA) of 1965, as amended (42 U.S.C. § 3121 *et seq.*).

Statement of Operating Objectives

N/A

Explanation and Justification

No resources are being requested for this grant program.

[THIS PAGE INTENTIONALLY LEFT BLANK]

Department of Commerce
Economic Development Administration
Economic Development Assistance Programs
PROGRAM CHANGES FOR 2021
 (Dollar amounts in thousands)

		2021 Base		2021 Estimate		Increase/Decrease from 2021 Base	
		Personnel	Amount	Personnel	Amount	Personnel	Amount
Public Works	Pos./BA	0	118,500	0	0	0	(118,500)
	FTE/Obl.	0	125,000	0	0	0	(125,000)

EDA is not requesting any resources for its Public Works Program.

[THIS PAGE INTENTIONALLY LEFT BLANK]

**Department of Commerce
Economic Development Administration
Economic Development Assistance Programs
PROGRAM AND PERFORMANCE: DIRECT OBLIGATIONS
(Dollar amounts in thousands)**

Activity: Partnership Planning

Line Item		2019 Actual		2020 Enacted		2021 Base		2021 Estimate		Increase/Decrease from 2021 Base	
		Personnel	Amount	Personnel	Amount	Personnel	Amount	Personnel	Amount	Personnel	Amount
Grants	Pos./BA	0	33,000	0	33,000	0	33,000	0	0	0	(33,000)
	FTE/Obl	0	33,455	0	33,000	0	33,000	0	0	0	(33,000)
Total	Pos./BA	0	33,000	0	33,000	0	33,000	0	0	0	(33,000)
	FTE/Obl	0	33,455	0	33,000	0	33,000	0	0	0	(33,000)

[THIS PAGE INTENTIONALLY LEFT BLANK]

**Department of Commerce
Economic Development Administration
Economic Development Assistance Programs
JUSTIFICATION OF PROGRAM AND PERFORMANCE
(Dollar amounts in thousands)**

Activity: Partnership Planning

Goal Statement

The Administration is not requesting funding for EDA's grant programs including the Partnership Planning Program.

Base Program

The Partnership Planning Program supported planning projects that helped a community identify regional assets, maximize economic opportunities, and establish strategies for promoting the competitiveness of an entire region. EDA's Partnership Planning Program provided the resources to help communities develop the bottom-up strategies that guide the identification and prioritization of future development decisions. EDA's Partnership Planning Program helped support local organizations (Economic Development Districts (EDD), Indian Tribes, and other eligible entities) with their long-term planning efforts, outreach to communities, and development of Comprehensive Economic Development Strategies (CEDS).

The CEDS, which may continue to be utilized by communities after the closure of EDA, is designed to bring together public and private sector stakeholders in the creation of a regional economic roadmap to diversify and strengthen regional economies. The CEDS analyzes the regional economy and serves as a guide for establishing regional goals and objectives, developing and implementing a regional plan of action, identifying investment priorities and funding sources, and assigning responsibilities for execution of the strategy. Public and private sector partnerships are critical to the implementation of the integrated elements of a CEDS. As a performance-based plan, the CEDS serves a critical role in a region's efforts to defend against economic dislocations due to trade impacts, competition and other events that would result in the loss of jobs and private investment. The CEDS can be used as a valuable tool for other federal programs because it outlines a community's regional strengths, weaknesses and plan for growth.

The program's authorizing statute is the Public Works and Economic Development Act (PWEDA) of 1965, as amended (42 U.S.C. § 3121 *et seq.*).

Statement of Operating Objectives

N/A

Explanation and Justification

No resources are being requested for this grant program.

[THIS PAGE INTENTIONALLY LEFT BLANK]

**Department of Commerce
Economic Development Administration
Economic Development Assistance Programs
PROGRAM CHANGES FOR 2021
(Dollar amounts in thousands)**

		2021 Base		2021 Estimate		Increase/Decrease from 2021 Base	
		Personnel	Amount	Personnel	Amount	Personnel	Amount
Partnership	Pos./BA	0	33,000	0	0	0	(33,000)
Planning	FTE/Obl.	0	33,000	0	0	0	(33,000)

EDA is not requesting any resources for its Partnership Planning Program.

[THIS PAGE INTENTIONALLY LEFT BLANK]

**Department of Commerce
Economic Development Administration
Economic Development Assistance Programs
PROGRAM AND PERFORMANCE: DIRECT OBLIGATIONS
(Dollar amounts in thousands)**

Activity: Technical Assistance

Line Item		2019		2020		2021		2021		Increase/Decrease	
		Personnel	Amount	Personnel	Amount	Personnel	Amount	Personnel	Amount	Personnel	Amount
Grants	Pos./BA	0	9,500	0	9,500	0	9,500	0	0	0	(9,500)
	FTE/Obl	0	9,964	0	10,200	0	10,200	0	0	0	(10,200)
Total	Pos./BA	0	9,500	0	9,500	0	9,500	0	0	0	(9,500)
	FTE/Obl	0	9,964	0	10,200	0	10,200	0	0	0	(10,200)

[THIS PAGE INTENTIONALLY LEFT BLANK]

Department of Commerce
Economic Development Administration
Economic Development Assistance Programs
JUSTIFICATION OF PROGRAM AND PERFORMANCE
(Dollar amounts in thousands)

Activity: Technical Assistance

Goal Statement

The Administration is not requesting funding for EDA's grant programs including the Technical Assistance Program.

Base Program

EDA oversaw three technical assistance sub-programs (University Center, Local, and National) that promoted economic development and alleviated unemployment, underemployment and out-migration in distressed regions.

The University Center (UC) sub-program was specifically designed to marshal the resources located within colleges and universities to support job creation and economic growth in regions experiencing economic distress. University Centers were required to devote the majority of their funding to respond to technical assistance requests originating from communities and organizations located in the economically distressed areas of their service regions.

The Local Technical Assistance (TA) sub-program was commonly used to analyze the feasibility of a potential economic development project, such as an industrial park or a high-technology business incubator. Economically distressed communities often have a pre-disposition towards the same type of industry that have historically been employers in the area, while market forces may be moving in another direction. Feasibility studies helped determine whether the market would support a particular activity or site.

The National Technical Assistance (TA) sub-program assisted economic development organizations to create new economic development tools that support efforts to attract private investment to regions and local communities. It sought to provide timely information on best practices in economic development critical to practitioners' efforts to alleviate economic distress and promote economic development. EDA also conducted demonstrations of promising economic development tools and techniques and disseminated the results to state and local organizations as well as urban, rural, and Native American communities. This program identified and funded the collection and dissemination of new knowledge, analysis, and technical information to help communities assess their economic development opportunities.

The National TA sub-program also supported the dissemination and implementation of research and information to economic development policymakers and practitioners.

The program's authorizing statute is the Public Works and Economic Development Act (PWEDA) of 1965, as amended (42 U.S.C. § 3121 *et seq.*).

Statement of Operating Objectives

N/A

Explanation and Justification

No resources are being requested for this grant program.

**Department of Commerce
Economic Development Administration
Economic Development Assistance Programs
PROGRAM CHANGES FOR 2021
(Dollar amounts in thousands)**

		2021 Base		2021 Estimate		Increase/Decrease from 2021 Base	
		Personnel	Amount	Personnel	Amount	Personnel	Amount
Technical Assistance	Pos./BA	0	9,500	0	0	0	(9,500)
	FTE/Obl.	0	10,200	0	0	0	(10,200)

EDA is not requesting any resources for its Technical Assistance Program.

[THIS PAGE INTENTIONALLY LEFT BLANK]

**Department of Commerce
Economic Development Administration
Economic Development Assistance Programs
PROGRAM AND PERFORMANCE: DIRECT OBLIGATIONS
(Dollar amounts in thousands)**

Activity: Research and Evaluation

Line Item		2019		2020		2021		2021		Increase/Decrease	
		Actual		Enacted		Base		Estimate		from 2021 Base	
		Personnel	Amount	Personnel	Amount	Personnel	Amount	Personnel	Amount	Personnel	Amount
Grants	Pos./BA	0	1,500	0	1,500	0	1,500	0	0	0	(1,500)
	FTE/Obl	0	2,173	0	1,565	0	1,565	0	0	0	(1,565)
Total	Pos./BA	0	1,500	0	1,500	0	1,500	0	0	0	(1,500)
	FTE/Obl	0	2,173	0	1,565	0	1,565	0	0	0	(1,565)

[THIS PAGE INTENTIONALLY LEFT BLANK]

**Department of Commerce
Economic Development Administration
Economic Development Assistance Programs
JUSTIFICATION OF PROGRAM AND PERFORMANCE
(Dollar amounts in thousands)**

Activity: Research and Evaluation

Goal Statement

The Administration is not requesting funding for EDA's grant programs including the Research and Evaluation Program.

Base Program

EDA's Research and Evaluation funds supported the development of tools, recommendations, and resources to shape investment decisions and inform policymakers as well as regional planning decision-making at the local level. Research and Evaluation Program investments provided cutting-edge research and evaluation of EDA's programs, including the identification of best practices, which were disseminated to regional, state, and local practitioners.

EDA's Research and Evaluation investments were designed to identify and disseminate the best thinking and best practices of economic development in the 21st century. Methodologically sound program evaluations helped to identify the most effective ways to increase the return on taxpayer investment, increase private capital investment, and create higher-skill, higher-wage jobs. The Research and Evaluation Program was carried out through grants and cooperative agreements, as well as through studies conducted in-house by EDA research staff.

The program's authorizing statute is the Public Works and Economic Development Act (PWEDA) of 1965, as amended (42 U.S.C. § 3121 *et seq.*).

Statement of Operating Objectives

N/A

Explanation and Justification

No resources are being requested for this grant program.

[THIS PAGE INTENTIONALLY LEFT BLANK]

**Department of Commerce
Economic Development Administration
Economic Development Assistance Programs
PROGRAM CHANGES FOR 2021
(Dollar amounts in thousands)**

		2021 Base		2021 Estimate		Increase/Decrease from 2021 Base	
		Personnel	Amount	Personnel	Amount	Personnel	Amount
Research and Evaluation	Pos./BA	0	1,500	0	0	0	(1,500)
	FTE/Obl.	0	1,565	0	0	0	(1,565)

EDA is not requesting any resources for its Research and Evaluation Program.

[THIS PAGE INTENTIONALLY LEFT BLANK]

**Department of Commerce
 Economic Development Administration
 Economic Development Assistance Programs
 PROGRAM AND PERFORMANCE: DIRECT OBLIGATIONS
 (Dollar amounts in thousands)**

Activity: Trade Adjustment Assistance

Line Item		2019		2020		2021		2021		Increase/Decrease	
		Actual		Enacted		Base		Estimate		from 2021 Base	
		Personnel	Amount	Personnel	Amount	Personnel	Amount	Personnel	Amount	Personnel	Amount
Grants	Pos./BA	0	13,000	0	13,000	0	13,000	0	0	0	(13,000)
	FTE/Obl	0	13,000	0	13,000	0	13,000	0	0	0	(13,000)
Total	Pos./BA	0	13,000	0	13,000	0	13,000	0	0	0	(13,000)
	FTE/Obl	0	13,000	0	13,000	0	13,000	0	0	0	(13,000)

[THIS PAGE INTENTIONALLY LEFT BLANK]

**Department of Commerce
Economic Development Administration
Economic Development Assistance Programs
JUSTIFICATION OF PROGRAM AND PERFORMANCE
(Dollar amounts in thousands)**

Activity: Trade Adjustment Assistance

Goal Statement

The Administration is not requesting funding for EDA's grant programs including the Trade Adjustment Assistance for Firms Program.

Base Program

The mission of the Trade Adjustment Assistance for Firms (TAAF) Program was to help import-impacted U.S. firms regain competitiveness in the global marketplace, thereby helping to retain and create U.S. jobs. The program provided cost-shared direct technical assistance in the development of business recovery plans, which are known as Adjustment Proposals (APs) under Section 252 of the Trade Act, as well as federal matching funds to implement projects outlined in the proposals to expand markets, strengthen operations and increase competitiveness. Firms contributed a matching share to create and implement their recovery plans.

The TAAF Program provided technical assistance to help U.S. firms experiencing a decline in sales and employment, resulting in part from the increase in imports of similar or directly competitive articles, to become more competitive in the global marketplace. The TAAF Program was a trade remedy mechanism which, rather than relying on tariffs, quotas or duties, supported free trade by helping trade import-impacted firms and industries regain their economic competitiveness. EDA funded and worked in partnership with a national network of 11 Trade Adjustment Assistance Centers (TAACs).

EDA's TAAF Program is authorized under chapters 3 and 5 of title II of the Trade Act of 1974, as amended (19 U.S.C. § 2341 *et seq.*).

Statement of Operating Objectives

N/A

Explanation and Justification

No resources are being requested for this grant program.

[THIS PAGE INTENTIONALLY LEFT BLANK]

**Department of Commerce
Economic Development Administration
Economic Development Assistance Programs
PROGRAM CHANGES FOR 2021
(Dollar amounts in thousands)**

		2021 Base		2021 Estimate		Increase/Decrease from 2021 Base	
		Personnel	Amount	Personnel	Amount	Personnel	Amount
Trade Adjustment Assistance	Pos./BA	0	13,000	0	0	0	(13,000)
	FTE/Obl.	0	13,000	0	0	0	(13,000)

EDA is not requesting any resources for its Trade Adjustment Assistance for Firms Program.

[THIS PAGE INTENTIONALLY LEFT BLANK]

**Department of Commerce
Economic Development Administration
Economic Development Assistance Programs
PROGRAM AND PERFORMANCE: DIRECT OBLIGATIONS
(Dollar amounts in thousands)**

Activity: Economic Adjustment Assistance

Line Item		2019		2020		2021		2021		Increase/Decrease	
		Actual		Enacted		Base		Estimate		from 2021 Base	
		FTE	Amount	FTE	Amount	FTE	Amount	FTE	Amount	FTE	Amount
Grants	Pos./BA	0	37,000	0	37,000	0	37,000	0	0	0	(37,000)
	FTE/Obl	0	42,418	0	41,346	0	41,346	0	0	0	(41,346)
Total	Pos./BA	0	37,000	0	37,000	0	37,000	0	0	0	(37,000)
	FTE/Obl	0	42,418	0	41,346	0	41,346	0	0	0	(41,346)

[THIS PAGE INTENTIONALLY LEFT BLANK]

**Department of Commerce
Economic Development Administration
Economic Development Assistance Programs
JUSTIFICATION OF PROGRAM AND PERFORMANCE
(Dollar amounts in thousands)**

Activity: Economic Adjustment Assistance

Goal Statement

The Administration is not requesting funding for EDA's grant programs including the Economic Adjustment Assistance (EAA) Program.

Base Program

Part of EDA's mission was to help distressed communities address problems associated with long-term economic distress, as well as sudden and severe economic dislocations including recovering from the economic impacts of natural disasters, the closure of coal and nuclear power plants, changing trade patterns, and the depletion of natural resources.

Through the EAA Program, EDA helped local communities design and implement strategies to address evolving economic conditions that were causing or threatened to cause serious structural damage to the underlying economic base or were undermining locally-developed development goals. The EAA Program provided the Agency a robust array of resources that could be brought to bear to support construction, technical assistance, and financing projects that helped distressed communities become more competitive and more prosperous. Specifically, the EAA program provided resources to address the needs of communities impacted by globalization, especially communities that needed to develop and implement collaborative regional innovation strategies to transform and diversify their economies and position them competitively.

A particular focus of EDA's EAA funding was to assist communities facing the closure of nuclear or coal power plants or lacking broadband infrastructure. EAA funds could be used to provide support such as designing a transition strategy, constructing or upgrading public infrastructure, conducting feasibility or environmental studies, supporting construction and operations of incubators and business accelerators, and capitalizing locally or regionally administered Revolving Loan Funds (RLFs).

The program's authorizing statute is the EDA's Public Works and Economic Development Act (PWEDA) of 1965, as amended (42 U.S.C. § 3121 *et seq.*).

Statement of Operating Objectives

N/A

Explanation and Justification

No resources are being requested for this grant program.

[THIS PAGE INTENTIONALLY LEFT BLANK]

**Department of Commerce
Economic Development Administration
Economic Development Assistance Programs
PROGRAM CHANGES FOR 2021
(Dollar amounts in thousands)**

		2021 Base		2021 Estimate		Increase/Decrease from 2021 Base	
		Personnel	Amount	Personnel	Amount	Personnel	Amount
Economic Adjustment Assistance	Pos./BA	0	37,000	0	0	0	(37,000)
	FTE/Obl.	0	41,346	0	0	0	(41,346)

EDA is not requesting any resources for its Economic Adjustment Assistance Program.

[THIS PAGE INTENTIONALLY LEFT BLANK]

**Department of Commerce
 Economic Development Administration
 Economic Development Assistance Programs
 PROGRAM AND PERFORMANCE: DIRECT OBLIGATIONS
 (Dollar amounts in thousands)**

Activity: Assistance to Coal Communities

Line Item		2019		2020		2021		2021		Increase/Decrease	
		Personnel	Amount	Personnel	Amount	Personnel	Amount	Personnel	Amount	Personnel	Amount
Grants	Pos./BA	0	30,000	0	30,000	0	30,000	0	0	0	(30,000)
	FTE/Obl	0	31,955	0	31,200	0	31,200	0	0	0	(31,200)
Total	Pos./BA	0	30,000	0	30,000	0	30,000	0	0	0	(30,000)
	FTE/Obl	0	31,955	0	31,200	0	31,200	0	0	0	(31,200)

[THIS PAGE INTENTIONALLY LEFT BLANK]

**Department of Commerce
Economic Development Administration
Economic Development Assistance Programs
JUSTIFICATION OF PROGRAM AND PERFORMANCE
(Dollar amounts in thousands)**

Activity: Assistance to Coal Communities

Goal Statement

The Administration is not requesting funding for EDA's grant programs including the Assistance to Coal Communities Program.

Base Program

This program competitively awarded grants to coalitions of regionally-driven economic development and workforce development organizations anchored in impacted coal communities. These grants enabled grantees to take deliberate and measured steps to build economic resilience and industry diversification and promote new job creation opportunities. Eligible activities included helping communities: organize themselves to respond on behalf of affected workers and businesses; strengthen or develop targeted industry clusters; prepare and train the existing workforce for new jobs; and help and execute coordinated economic and workforce development activities based on communities' strategic plans. These activities led to more competitive and resilient "pipelines" of skilled workers moving into new job opportunities.

This program line was created by the Consolidated and Further Continuing Appropriation Act, 2015 (PL 113-235) and is executed using EDA's current program authorities pursuant to EDA's authorizing statute, the Public Works and Economic Development Act (PWEDA) of 1965, as amended (42 U.S.C. § 3121 *et seq.*).

Statement of Operating Objectives

N/A

Explanation and Justification

No resources are being requested for this grant program.

[THIS PAGE INTENTIONALLY LEFT BLANK]

**Department of Commerce
Economic Development Administration
Economic Development Assistance Programs
PROGRAM CHANGES FOR 2021
(Dollar amounts in thousands)**

		2021 Base		2021 Estimate		Increase/Decrease from 2021 Base	
		Personnel	Amount	Personnel	Amount	Personnel	Amount
Assistance to Coal Communities	Pos./BA	0	30,000	0	0	0	(30,000)
	FTE/Obl.	0	31,200	0	0	0	(31,200)

EDA is not requesting any resources for its Assistance to Coal Communities Program.

[THIS PAGE INTENTIONALLY LEFT BLANK]

**Department of Commerce
 Economic Development Administration
 Economic Development Assistance Programs
 PROGRAM AND PERFORMANCE: DIRECT OBLIGATIONS
 (Dollar amounts in thousands)**

Activity: Assistance to Nuclear Closure Communities

Line Item		2019		2020		2021		2021		Increase/Decrease	
		Personnel	Amount	Personnel	Amount	Personnel	Amount	Personnel	Amount	Personnel	Amount
Grants	Pos./BA	0	0	0	15,000	0	15,000	0	0	0	(15,000)
	FTE/Obl	0	0	0	15,000	0	15,000	0	0	0	(15,000)
Total	Pos./BA	0	0	0	15,000	0	15,000	0	0	0	(15,000)
	FTE/Obl	0	0	0	15,000	0	15,000	0	0	0	(15,000)

[THIS PAGE INTENTIONALLY LEFT BLANK]

**Department of Commerce
Economic Development Administration
Economic Development Assistance Programs
JUSTIFICATION OF PROGRAM AND PERFORMANCE
(Dollar amounts in thousands)**

Activity: Assistance to Nuclear Closure Communities

Goal Statement

The Administration is not requesting funding for EDA's grant programs including the Assistance to Nuclear Closure Communities Program.

Base Program

This program competitively awarded grants to coalitions of regionally-driven economic development and workforce development organizations anchored in impacted nuclear closure communities. These grants enabled grantees to take deliberate and measured steps to build economic resilience and industry diversification and promote new job creation opportunities. Eligible activities included helping communities: organize themselves to respond on behalf of affected workers and businesses; strengthen or develop targeted industry clusters; prepare and train the existing workforce for new jobs; and help and execute coordinated economic and workforce development activities based on communities' strategic plans. These activities led to more competitive and resilient "pipelines" of skilled workers moving into new job opportunities.

This program line was created by the Consolidated Appropriation Act, 2020 (PL 116-93) and is executed using EDA's current program authorities pursuant to EDA's authorizing statute, the Public Works and Economic Development Act (PWEDA) of 1965, as amended (42 U.S.C. § 3121 *et seq.*).

Statement of Operating Objectives

N/A

Explanation and Justification

No resources are being requested for this grant program.

[THIS PAGE INTENTIONALLY LEFT BLANK]

**Department of Commerce
Economic Development Administration
Economic Development Assistance Programs
PROGRAM CHANGES FOR 2021
(Dollar amounts in thousands)**

		2021 Base		2021 Estimate		Increase/Decrease from 2021 Base	
		Personnel	Amount	Personnel	Amount	Personnel	Amount
Assistance to Nuclear Closure Communities	Pos./BA	0	15,000	0	0	0	(15,000)
	FTE/Obl.	0	15,000	0	0	0	(15,000)

EDA is not requesting any resources for its Assistance to Nuclear Closure Communities Program.

[THIS PAGE INTENTIONALLY LEFT BLANK]

**Department of Commerce
 Economic Development Administration
 Economic Development Assistance Programs
 PROGRAM AND PERFORMANCE: DIRECT OBLIGATIONS
 (Dollar amounts in thousands)**

Activity: Regional Innovation

Line Item		2019		2020		2021		2021		Increase/ (Decrease)	
		Personnel	Amount	Personnel	Amount	Personnel	Amount	Personnel	Amount	Personnel	Amount
Grants	Pos./BA	0	23,500	0	33,000	0	33,000	0	0	0	(33,000)
	FTE/Obl	0	44,226	0	33,692	0	33,692	0	0	0	(33,692)
Total	Pos./BA	0	23,500	0	33,000	0	33,000	0	0	0	(33,000)
	FTE/Obl	0	44,226	0	33,692	0	33,692	0	0	0	(33,692)

[THIS PAGE INTENTIONALLY LEFT BLANK]

**Department of Commerce
Economic Development Administration
Economic Development Assistance Programs
JUSTIFICATION OF PROGRAM AND PERFORMANCE
(Dollar amounts in thousands)**

Activity: Regional Innovation

Goal Statement

The Administration is not requesting funding for EDA's grant programs including the Regional Innovation Program (RIP).

Base Program

The RIP was a distinct program in EDA's portfolio that awarded funds to a broad range of communities and entities to develop and strengthen high-growth, innovation-based regional economies. The program aimed to build local capacity for economic growth through strategic investment opportunities that leverage the innovation capacity found in America's regions by supporting sector- and cluster-based, high-growth entrepreneurship.

The RIP had two components identified through its authorizing legislation: Cluster Grants and the Regional Innovation Research and Information (RIRI) Program. Cluster Grants supported activities relating to the formation and development of regional innovation clusters. The RIRI Program was designed to provide research, technical assistance, performance metrics and data pertaining to regional innovation strategies and clusters. To date, all funding had been allocated to the Cluster Grants.

This program's authorizing statute is Section 27 of the Stevenson-Wydler Technology Innovation Act of 1980, as amended (13 U.S.C. § 3722).

Statement of Operating Objectives

N/A

Explanation and Justification

No resources are being requested for this grant program.

[THIS PAGE INTENTIONALLY LEFT BLANK]

**Department of Commerce
Economic Development Administration
Economic Development Assistance Programs
PROGRAM CHANGES FOR 2021
(Dollar amounts in thousands)**

		2021 Base		2021 Estimate		Increase/Decrease from 2021 Base	
		Personnel	Amount	Personnel	Amount	Personnel	Amount
Regional Innovation	Pos./BA	0	33,000	0	0	0	(33,000)
	FTE/Obl.	0	33,692	0	0	0	(33,692)

EDA is not requesting any resources for its Regional Innovation Program.

[THIS PAGE INTENTIONALLY LEFT BLANK]

**Department of Commerce
Economic Development Administration
Economic Development Assistance Programs
PROGRAM AND PERFORMANCE: DIRECT OBLIGATIONS
(Dollar amounts in thousands)**

Activity: STEM Apprenticeship Pilot Program

Line Item		2019		2020		2021		2021		Increase/Decrease	
		Actual	Amount	Enacted	Amount	Base	Amount	Estimate	Amount	Personnel	Amount
Grants	Pos./BA	0	0	0	2,000	0	2,000	0	0	0	(2,000)
	FTE/Obl	0	0	0	2,000	0	2,000	0	0	0	(2,000)
Total	Pos./BA	0	0	0	2,000	0	2,000	0	0	0	(2,000)
	FTE/Obl	0	0	0	2,000	0	2,000	0	0	0	(2,000)

[THIS PAGE INTENTIONALLY LEFT BLANK]

**Department of Commerce
Economic Development Administration
Economic Development Assistance Programs
JUSTIFICATION OF PROGRAM AND PERFORMANCE
(Dollar amounts in thousands)**

Activity: STEM Apprenticeship Pilot Program

Goal Statement

The Administration is not requesting funding for EDA's grant programs including the STEM Apprenticeship Pilot Program.

Base Program

Two of EDA's long-standing investment priorities—workforce development and economic resilience—strongly align with the need to increase science, technology, engineering and math (STEM) talent development efforts across the nation, especially as it relates to our growing regional innovation economies which are experiencing an increased demand for workers with STEM skills. Through management of the Regional Innovation Strategies Program, EDA's Office of Innovation and Entrepreneurship has found that as communities increase their entrepreneurship activity, they struggle to find qualified talent to help grow these businesses of the future. This pilot national grant competition aimed at supporting STEM talent development complemented EDA's other programs that increased the programming and capital that are driving regional innovation.

This program's authorizing statute is Section 28 of the Stevenson-Wydler Technology Innovation Act of 1980, as amended (13 U.S.C. § 3723).

Statement of Operating Objectives

N/A

Explanation and Justification

No resources are being requested for this grant program.

[THIS PAGE INTENTIONALLY LEFT BLANK]

**Department of Commerce
Economic Development Administration
Economic Development Assistance Programs
PROGRAM CHANGES FOR 2021
(Dollar amounts in thousands)**

		2021 Base		2021 Estimate		Increase/Decrease from 2021 Base	
		Personnel	Amount	Personnel	Amount	Personnel	Amount
	Pos./BA	0	2,000	0	0	0	(2,000)
STEM Apprenticeship Pilot Program	FTE/Obl.	0	2,000	0	0	0	(2,000)

EDA is not requesting any resources for its STEM Apprenticeship Pilot Program.

[THIS PAGE INTENTIONALLY LEFT BLANK]

**Department of Commerce
Economic Development Administration
Economic Development Assistance Programs
SUMMARY OF REQUIREMENTS BY OBJECT CLASS
(Dollar amounts in thousands)**

Object Class	2019 Actual	2020 Enacted	2021 Base	2021 Estimate	Increase/Decrease over 2021 Base
41 Grants, subsidies and contributions	651,684	780,388	780,388	237,000	(543,388)
99.9 Total Obligations	651,684	780,388	780,388	237,000	(543,388)
Less prior year recoveries	21,509	20,870	20,870	33,203	12,333
Less prior year unobligated balance	529,408	745,515	745,515	250,297	(495,218)
Less unobligated balance transferred	(8,718)	(11,200)	(11,200)	(6,000)	5,200
Less unobligated balance, end of year	(745,515)	(250,297)	(250,297)	(2,500)	247,797
Less rescission or cancellation of unobligated balances ¹	(10,000)	(17,000)	(17,000)	(38,000)	(21,000)
Total Budget Authority	865,000	292,500	292,500	0	(292,500)
 Personnel Data					
Full-Time equivalent Employment:					
Full-time permanent	0	0	0	0	0
Other than full-time permanent	0	0	0	0	0
Total	0	0	0	0	0
 Authorized Positions:					
Full-time permanent	0	0	0	0	0
Other than full-time permanent	0	0	0	0	0
Total	0	0	0	0	0

¹ Rescission or proposed cancellation is taken from non-disaster balances.

[THIS PAGE INTENTIONALLY LEFT BLANK]

**Department of Commerce
Economic Development Administration
Economic Development Assistance Programs
JUSTIFICATION OF PROPOSED LANGUAGE CHANGES
(Dollar amounts in thousands)**

FY 2021

This language is proposed for the orderly closedown of the Economic Development Administration and its grants and loans previously awarded.

ECONOMIC DEVELOPMENT ASSISTANCE PROGRAMS

In addition to amounts made available to the Economic Development Administration under the heading "Salaries and Expenses", unobligated balances previously appropriated under this heading, to remain available until expended, for purposes of the closure of the Economic Development Administration, including but not limited to, ongoing administration, oversight and monitoring of grants and loans previously awarded by the Economic Development Administration, whether expended by the Economic Development Administration or a successor operating unit within the Department of Commerce: provided, that such funds will be available to such successor operating unit in addition to any other amounts that may be appropriated for the necessary expenses of such operating unit from whatever source.

The following language is proposed in the general provisions for the Department of Commerce to cancel amounts from prior appropriations:

SEC. 515. (a)(1) Of the unobligated balances from prior year appropriations available to the Department of Commerce, Economic Development Administration, Economic Development Assistance Programs, \$38,000,000 is cancelled not later than September 30, 2021.

EDA requires special authority to close down its RLFs (i.e., defederalize), which are designed to run in perpetuity. As of December 2018, EDA oversees about 510 RLFs nationwide, with a combined EDA investment of almost \$566 million. EDA's RLF portfolio has a combined capital base of about \$870 million (includes EDA investment plus grantee matching funds plus interest income), of which approximately \$331 million is available for lending.

The following language is proposed in the general provisions for the Department of Commerce to allow for the defederalization of EDA's Revolving Loan Fund grants:

SEC. 543. Section 601(d)(2) of the Public Works and Economic Development Act of 1965, as amended (42 U.S.C. 3211), is amended—

(1) by striking “(2) RELEASE.—” and inserting the following:

“(2) RELEASE.—

“(A) IN GENERAL.—”; and

(2) by adding at the end the following:

“(B) REVOLVING LOAN FUND PROGRAM.—

The Secretary may release, subject to terms and conditions the Secretary determines appropriate, the Federal Government’s interest in connection with a grant under section 209(d) not less than 7 years after final disbursement of the grant, if—

“(i) the recipient has carried out the terms of the award in a satisfactory manner;

“(ii) any proceeds realized from the release of the Federal Government’s interest will be used for one or more activities that continue to carry out the economic development purposes of this Act; and

“(iii) the recipient shall provide adequate assurance to the Secretary that at all times after release of the Federal Government’s interest in connection with the grant, the recipient will be responsible for continued compliance with the requirements of section 602 in the same manner it was responsible prior to release of the Federal Government’s interest and that the recipient’s failure to comply shall result in the Secretary taking appropriate action”.

**Department of Commerce
Economic Development Administration
Economic Development Assistance Programs
APPROPRIATION LANGUAGE AND CODE CITATION**

FY 2021

Economic Development Assistance Programs

- 1 For necessary expenses of the economic development assistance programs as provided for by law,

42 U.S.C. 3214(c), 3231

42 U.S.C. 3214(c) - Authorizes the transfer of appropriated funds from other Federal agencies, if such funds are used for the purpose for which (and in accordance with the terms under which) the funds are specifically authorized and appropriated.

42 U.S.C. 3231 - Authorizes funds to be appropriated for economic development assistance programs to carry out 42 U.S.C. 3121 *et seq.*, through fiscal year 2008, to remain available until expended.

- 2 Authorization of appropriations for defense conversion activities,

42 U.S.C. 3232

42 U.S.C. 3232(a) - In addition to amounts made available under section 3231 of this title, there are authorized to be appropriated such sums as are necessary to carry out section 3149(c)(1) of this title, to remain available until expended.

42 U.S.C. 3232(b) - Funds made available under subsection (a) of this section may be used for activities including pilot projects for privatization of, and economic development activities for, closed or realigned military or Department of Energy installations.

- 3 Authorization of appropriations for disaster economic recovery activities,

42. U.S.C. 3233

42. U.S.C. 3233(a) - In addition to amounts made available under section 3231 of this title, there are authorized to be appropriated such sums as are necessary to carry out section 3149(c)(2) of this title, to remain available until expended.

42. U.S.C. 3233(b) - The Federal share of the cost of activities funded with amounts made available under subsection (a) of this section shall be up to 100 percent.

- 4 Funding for grants for planning and grants for administrative expenses,

42 U.S.C. 3234

Of the amounts made available under section 3231 of this title for each fiscal year, not less than \$27,000,000 shall be made available for grants provided under section 3143 of this title.

- 5 Provided, that these funds may be used to monitor projects approved pursuant to title I of the Public Works Employment Act of 1976, as amended,

42 U.S.C. 6710

42 U.S.C. 6710 - Authorized appropriations for the administration of the Local Public Works Capital Development and Investment Act of 1976.

- 6 Title II of the Trade Act of 1974, as amended, and 19 U.S.C. 2345 – Authorizes appropriations to carry out Trade Adjustment Assistance for Firms (TAAF),

Public Law No: 114-27, Trade Preferences Extension Act of 2015. Title IV of that Act, entitled the “Trade Adjustment Assistance Reauthorization Act of 2015” extends the authorization of appropriations for TAAF through fiscal year 2021.

- 7 The Community Emergency Drought Relief Act of 1977 (including monitoring and close-out),

42 U.S.C. 5184 note

42 U.S.C. 5184 note - Authorized appropriations to carry out those provisions of the Community Emergency Drought Relief Act of 1977.

- 8 For section 27 of the Stevenson-Wydler Technology Innovation Act of 1980 (15 U.S.C. 3722).

- 9 For section 28 of the Stevenson-Wydler Technology Innovation Act of 1980 (15 U.S.C. 3723).

**Department of Commerce
Economic Development Administration
Salaries and Expenses
SUMMARY OF RESOURCE REQUIREMENTS
(Dollar amounts in thousands)**

	Positions	FTE	Budget Authority	Direct Obligations
FY 2020 Enacted	205	0	40,500	54,596
2021 Adjustments to base: <i>Plus: Inflationary/Adjustments to base</i>			2,618	2,618
2021 Base	205	0	43,118	57,214
<i>Plus: 2021 Program changes</i>	(106)	0	(11,525)	(19,410)
2021 Estimate	99	0	31,593	37,804

Comparison by activity / subactivity with totals by activity			2019 Actual		2020 Enacted		2021 Base		2021 Estimate		Increase/Decrease from 2021 Base	
			Personnel	Amount	Personnel	Amount	Personnel	Amount	Personnel	Amount	Personnel	Amount
EDA-95	Operations and Administration (1-year)	Pos./BA	205	39,000	205	40,500	205	43,118	99	31,593	(106)	(11,525)
		FTE/Obl.	172	38,441	184	40,234	184	42,852	99	31,593	(85)	(11,259)
EDA-113	Operations and Administration (No-year)	Pos./BA	0	0	0	0	0	0	0	0	0	0
		FTE/Obl.	0	1,313	0	2,941	0	2,941	0	0	0	(2,941)
	Disaster Operations ² (No-year)	Pos./BA	65	0	55	0	55	0	53	0	(2)	0
		FTE/Obl.	14	4,022	33	11,421	33	11,421	53	6,211	20	(5,210)
	Total	Pos./BA	270	39,000	260	40,500	260	43,118	152	31,593	(108)	(11,525)
		FTE/Obl.	186	43,776	217	54,596	217	57,214	152	37,804	(65)	(19,410)
	Adjustments for:											
	Recoveries			(3)		(10)		(10)		(10)		0
	Unobligated balance, start of year ¹			(3,860)		(6,246)		(6,246)		(2,273)		3,973
	Unobligated balance transferred			(6,218)		(10,380)		(10,380)		(6,000)		4,380
	Unobligated balance, end of year ¹			6,246		2,273		2,273		1,872		(401)
	Unobligated balance expiring			559		267		267		200		(67)
	Financing from transfers:											
	Transfer from other accounts (-) ¹			(1,500)		0		0		0		0
	Transfer to other accounts (+)			0		0		0		0		0
	Appropriation			39,000		40,500		43,118		31,593		(11,525)

¹ Amounts include both disaster and non-disaster funding.

² obligation amounts include funds transferred into this account for disasters in 2012 and 2017 to 2019

[THIS PAGE INTENTIONALLY LEFT BLANK]

**Department of Commerce
Economic Development Administration
Salaries and Expenses
SUMMARY OF REIMBURSABLE OBLIGATIONS
(Dollar amounts in thousands)**

Comparison by activity:		2019		2020		2021		2021		Increase/Decrease	
		Actual		Enacted		Base		Estimate		from 2021 Base	
		Personnel	Amount	Personnel	Amount	Personnel	Amount	Personnel	Amount	Personnel	Amount
Operations and Administration	Pos./BA	0	4,820	0	4,000	0	4,000	0	1,000	0	(3,000)
(1-year)	FTE/Obl.	0	2,344	0	4,000	0	4,000	0	1,000	0	(3,000)
Total	Pos./BA	0	4,820	0	4,000	0	4,000	0	1,000	0	(3,000)
	FTE/Obl.	0	2,344	0	4,000	0	4,000	0	1,000	0	(3,000)

[THIS PAGE INTENTIONALLY LEFT BLANK]

**Department of Commerce
Economic Development Administration
Salaries and Expenses
SUMMARY OF FINANCING
(Dollar amounts in thousands)**

	2019 Actual	2020 Enacted	2021 Base	2021 Estimate	Increase/Decrease from 2021 Base
Total Obligations	46,120	58,596	61,214	38,804	(22,410)
Offsetting collections from:					
Federal funds	(2,344)	(4,000)	(4,000)	(1,000)	3,000
Trust funds	0	0	0	0	0
Non-Federal sources	0	0	0	0	0
Recoveries	(3)	(10)	(10)	(10)	0
Unobligated balance, start of year	(3,860)	(6,246)	(6,246)	(2,273)	3,973
Unobligated balance, transferred	(6,218)	(10,380)	(10,380)	(6,000)	4,380
Unobligated balance, end of year	6,246	2,273	2,273	1,872	(401)
Unobligated balance, expiring	559	267	267	200	(67)
Budget Authority	40,500	40,500	43,118	31,593	(11,525)
Financing:					
Transfer from other accounts (-)	(1,500)	0	0	0	0
Transfer to other accounts (+)	0	0	0	0	0
Appropriation	39,000	40,500	43,118	31,593	(11,525)

[THIS PAGE INTENTIONALLY LEFT BLANK]

**Department of Commerce
Economic Development Administration
Salaries and Expenses
ADJUSTMENTS TO BASE
(Dollar amounts in thousands)**

	<u>FTE</u>	<u>Amount</u>
Transfers to Departmental Management Salaries and Expenses Account	0	(183)
Adjustments	0	0
Financing	0	0
<hr/>		
Other Changes		
2020 Pay raise	0	644
2021 Pay raise	0	156
Increase in awards		244
Full-year cost in 2021 of positions financed for part-year in 2020	0	0
Change in compensable days		(98)
Civil Service Retirement System (CSRS)		(26)
Federal Employees Retirement System (FERS)		320
Thrift Savings Plan (TSP)		8
Federal Insurance Contribution Act (FICA) - OASDI		57
Health insurance		62
Employees Compensation Fund		22
Travel:		
Mileage		0
Per diem		3
Rental payments to GSA		267
Postage		0
Printing and reproduction		0
National Archive and Records Administration		0
Working Capital Fund		(7)
General Pricing Level Adjustment		1,084
Federal Protective Services		6
Continuous Diagnostics and Mitigation Charges		7
Enterprise Services		55
Grants		0
Subtotal, other changes	0	2,801
Total, adjustments to base	0	2,618

[THIS PAGE INTENTIONALLY LEFT BLANK]

**Department of Commerce
Economic Development Administration
Salaries and Expenses
PROGRAM AND PERFORMANCE: DIRECT OBLIGATIONS
(Dollar amounts in thousands)**

Activity: Operations and Administration (1-year)

Line Item	2019		2020		2021		2021		Increase/Decrease		
	Actual		Enacted		Base		Estimate		from 2021 Base		
	Personnel	Amount	Personnel	Amount	Personnel	Amount	Personnel	Amount	Personnel	Amount	
Operations and Administration (1-year)	Pos./BA	205	39,000	205	40,500	205	43,118	99	31,593	(106)	(11,525)
	FTE/Obl	172	38,441	184	40,234	184	42,852	99	31,593	(85)	(11,259)
Total	Pos./BA	205	39,000	205	40,500	205	43,118	99	31,593	(106)	(11,525)
	FTE/Obl	172	38,441	184	40,234	184	42,852	99	31,593	(85)	(11,259)

[THIS PAGE INTENTIONALLY LEFT BLANK]

**Department of Commerce
Economic Development Administration
Salaries and Expenses
PROGRAM AND PERFORMANCE: REIMBURSABLE OBLIGATIONS
(Dollar amounts in thousands)**

Activity: Operations and Administration (1-year)

Comparison by activity		2019		2020		2021		2021		Increase/Decrease	
		Actual		Enacted		Base		Estimate		from 2021 Base	
		FTE	Amount	FTE	Amount	FTE	Amount	FTE	Amount	FTE	Amount
Operations and Administration (1-year)	Pos./BA	0	4,820	0	4,000	0	4,000	0	1,000	0	(3,000)
	FTE/Obl	0	2,344	0	4,000	0	4,000	0	1,000	0	(3,000)
Total	Pos./BA	0	4,820	0	4,000	0	4,000	0	1,000	0	(3,000)
	FTE/Obl	0	2,344	0	4,000	0	4,000	0	1,000	0	(3,000)

[THIS PAGE INTENTIONALLY LEFT BLANK]

**Department of Commerce
Economic Development Administration
Salaries and Expenses
JUSTIFICATION OF PROGRAM AND PERFORMANCE
(Dollar amounts in thousands)**

Activity: Operations and Administration (1-year)

Goal Statement

For 2021, EDA requests a decrease of about \$11.5 million and 106 positions below the 2020 enacted budget level, for a total of \$31.6 million and 99 positions for the Salaries and Expenses (S&E) account.

Base Program

The S&E appropriation generally supports the orderly closedown of EDA and the on-going administration, monitoring, and close-out of grants and loans previously awarded by EDA. These activities will be carried out through a steadily reducing footprint consisting of headquarters located in Washington, DC, and six Regional Offices located in Atlanta, Austin, Chicago, Denver, Philadelphia, and Seattle.

Executive Direction: The Assistant Secretary directs the Bureau's programs and is responsible for the conduct of all closedown activities at EDA's headquarters and Regional Offices, subject to the policies and directives prescribed by the Secretary of Commerce.

The Deputy Assistant Secretary and Chief Operating Officer assists the Assistant Secretary in all matters affecting EDA and performs the duties of the Assistant Secretary during the latter's absence.

Office of the Chief Counsel: The Office of the Chief Counsel (OCC) prepares and reviews legal documents to ensure that the orderly closedown of EDA and on-going administration of previous grants and loans are consistent with applicable legal requirements imposed on EDA programs by statute, regulation, Executive Order, OMB circular, or controlling policy document. The Chief Counsel directs and supervises the activities of the OCC, including those of EDA's six Regional Counsels in the field. OCC provides a full range of legal services incident to federal assistance law, such as reviewing the acceptability of title to property, sufficiency of diverse property-related agreements, and post-approval matters, such as resolving complex property issues relating to the use and disposition of project assets.

Office of Finance and Management Services: The Chief Financial Officer/Chief Administration Officer (CFO/CAO) is the senior official for financial and administrative management within EDA. As such, the CFO/CAO is responsible for managing EDA's budget execution, managing financial and accounting activities, directs EDA's efforts related to preparation of financial statements and the annual financial audit, and coordinating and evaluating internal management control systems. The CFO/CAO is also responsible for providing administrative support and information technology services for EDA headquarters and oversight of these services at the Regional Offices, for those services not already provided at the Departmental level. These service areas include acquisition management, human capital management, facilities, real and personal property, records management, and other support activities.

The Administration Division provides a full range of non-financial administrative services, unless otherwise provided at the Department level, for EDA headquarters and oversight of these services at the Regional Offices. The Division provides records and property management, human capital management, procurement management, security oversight, loan management, audit oversight and resolution management, continuity of operations planning, information technology, and other support activities.

The Budget and Finance Division, in concert with bureau and Departmental officials, develops, prepares, and executes the annual EDA budget. The Division is responsible for the fiscal aspects of EDA programs, including programs entrusted to other Federal agencies, by monitoring fiscal controls for program and administrative expenses including accounting and financial statement preparation, allotment of funds, operating budgets, staffing limitations, and analysis of reports and resource proposals, consistent with the requirements of the Anti-Deficiency Act.

Office of External Affairs and Communications: The Director of External Affairs and Communications coordinates EDA's public affairs, legislative affairs and executive secretariat activities, and acts as point of contact for members of Congress, Congressional staff, other Federal agencies, state and local governments, the media, and the general public. The Office provides appropriate and comprehensive bureau information necessary to respond to Secretarial, Congressional, intergovernmental, other Federal bureau, and public requests related to the closedown of EDA, and prepares and processes-controlled correspondence relating to grants and other bureau business.

The Public Affairs and Communications Division staff interacts with the public on behalf of EDA, and is responsible for the form, appearance, and content of all materials and information provided to EDA stakeholders, partners, customers, and the general public. The Division also directs EDA's internal communications.

The Legislative and Intergovernmental Affairs Division coordinates all activities relating to EDA relations and interactions with members of Congress, Congressional staff, other federal agencies, state and local elected officials, and other governmental and non-governmental organizations through all manner of written and verbal communication.

Office of Regional Affairs: The Deputy Assistant Secretary for Regional Affairs oversees program operations in the six Regional Offices, the Performance, Research and National Technical Assistance Division, Trade Adjustment Assistance for Firms Division, Economic Development Integration and Disaster Recovery Division, and the Office of Innovation and Entrepreneurship. As part of this responsibility, the Deputy Assistant Secretary for Regional Affairs ensures a bureau-wide focus on closing down EDA effectively; and the development and implementation of adequate internal controls to ensure EDA exercises adequate fiduciary oversight of its programs as it closes down. The Office of Regional Affairs develops and maintains program guidance, policies, directives, and operating procedures to ensure efficient administration of EDA's financial assistance programs as the bureau closes down.

The Performance, Research and National Technical Assistance Division measures EDA program performance with an eye to improving internal controls and promoting best practices that will result in efficient closedown of EDA. The Performance, Research and National Technical Assistance staff is also responsible for oversight, monitoring and close out of research and national technical assistance grants as the bureau closes down. They will also handle all close-out performance reporting to the Office of Management and Budget, the Department, Congress and other stakeholders.

EDA's Economic Development Integration and Disaster Recovery Division collaborates with federal peers to effectively coordinate disaster recovery operations under the Economic Recovery Support Function and to identify opportunities to facilitate the coordinated and effective investment of multiple federal economic development resources in support of high-impact projects and activities by implementing policies and methods that:

- **Increase Access:** Ensuring that local and regional applicants can easily identify and apply for the federal economic development resources that can best support their local priorities and objectives.
- **Enhance Collaboration:** Facilitating coordination among multiple partners and stakeholders (federal and non-federal, public and private) to promote multiple, strategic investments in support of local priorities that can contribute to sustainable economic growth, especially for distressed communities.
- **Reduce Administrative Burdens:** Working with federal interagency partners on guidance tools to help applicants navigate, and possibly consolidate different administrative requirements that are triggered by each individual award of federal assistance (e.g., strategic planning, reporting).

In addition to three EDI staff at EDA Headquarters, Regional Integrators² work in each of (Atlanta, GA, Austin, TX, Chicago, IL, Denver, CO, Philadelphia, PA, and Seattle, WA) to further enhance EDA's capacity to support local and regional economic development projects

The Trade Adjustment Assistance for Firms Division is responsible for oversight, monitoring and close out of grants to Trade Adjustment Assistance Centers (TAACs) across the nation which provide technical assistance to manufacturing firms to help them increase their global competitiveness.

The Office of Innovation and Entrepreneurship (OIE) will monitor and service previously funded EDA grants that focused on promoting and supporting high-growth entrepreneurship and accelerating commercialization of federally funded research. OIE will ensure that these grants are closed out in a timely manner consistent with EDA's overall shutdown plan.

The six Regional Offices include the six Regional Directors and their supporting operational, technical, and administrative personnel. Regional Directors are responsible for the closedown of EDA's programs within specific geographic regions, the management of regional resources, and the monitoring and servicing of previously funded projects. The Regional Offices are staffed with Regional Counsels who provide the legal reviews required to administer and closedown EDA investments. The Regional staffs monitor and service approved projects at the local level.

Statement of Operating Objectives

Support the orderly closedown of EDA and the on-going administration, monitoring, and close-out of grants and loans previously awarded by EDA.

Explanation and Justification

The EDA worked directly with local economic development officials to support their bottom-up, regionally-owned economic development initiatives. Linking EDA's investments to a community's strategic economic development plan enables the federal government to better leverage public and private sector investments to achieve economic development goals. Economic development is about creating the conditions for sustained economic growth and improved quality of life and prosperity for our citizens by expanding the capacity of individuals, firms, and communities to maximize the use of their talents and skills to support innovation, lower transaction costs, and responsibly produce and trade valuable goods and services.

² <https://www.eda.gov/edi/contact/>

The way in which EDA had such a dramatic impact all across the country is through its Comprehensive Economic Development Strategy planning requirements. Economic development planning through the Comprehensive Economic Development Strategies (CEDS) is not only a cornerstone of EDA's programs, but successfully serves as a means to engage the community and region in building the regional capacity to ultimately create an environment for regional economic prosperity. EDA's successful model of economic development included the following key elements: focusing on regional economic ecosystems and bottom-up strategies; and leveraging regional assets to the fullest extent - businesses, existing and emerging industry clusters, supply chains, technology, infrastructure, institutions of higher learning, and human talent.

EDA's programs were designed to provide a full range of tools and resources that can help communities build the capacity to capitalize on their full economic potential—whether by addressing an immediate critical infrastructure need, assisting with the development of a regional strategic plan, or helping a community connect to the worldwide marketplace. To build long-term capacity for sustained economic growth, EDA invested in partnerships with our local communities to build strategic economic development assets which support long-term growth and competitiveness. These partnerships had a laser focus: catalyze private investment; leverage resources to support the establishment and growth of globally competitive businesses; as well as strengthen innovation, manufacturing supply chains, an employer-driven, skilled workforce, exports, and foreign direct investment.

**Department of Commerce
Economic Development Administration
Salaries and Expenses
PROGRAM DECREASES FOR 2021
(Dollar amounts in thousands)**

		2021 Base		2021 Estimate		Increase/Decrease from 2021 Base	
		Personnel	Amount	Personnel	Amount	Personnel	Amount
		Elimination of EDA	Pos./BA	205	43,118	99	31,593
	FTE/Obl.	184	42,852	99	31,593	(85)	(11,259)

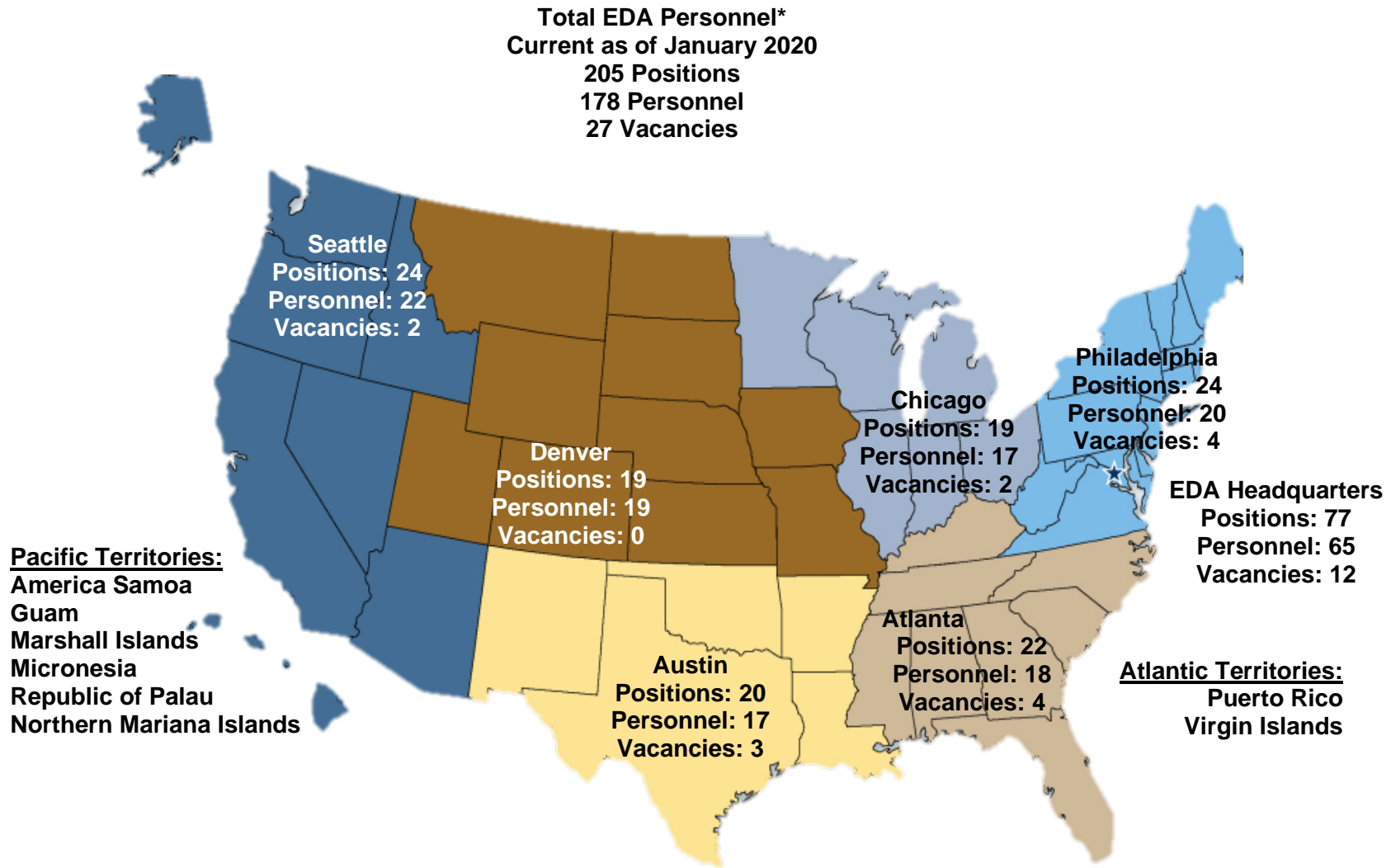
Eliminating EDA ((106) positions, (\$11,525 thousand)) – EDA proposes a program decrease of \$11,708 thousand for a total of \$31,593 and a decrease of 106 positions for a total of 99 positions. This 2021 request assumes 2021 is the first year of closure actions.

This request allows for the orderly closure of EDA and ongoing grant monitoring, management, and close-out activities. These amounts represent the estimated costs for the second year of closure activities and are intended to cover the following costs:

- Personnel costs, including severance payments, lump sum leave, salaries for personnel essential to servicing open grants during the closure, human resources support for conducting the closure, and any legal costs.
- Real property, to cover either early termination fees or the full cost of the lease if necessary.
- Miscellaneous costs associated with closing down the agency, including records management, responsible disposal of IT equipment, furniture removal, and any other costs required for the orderly closure of the agency.

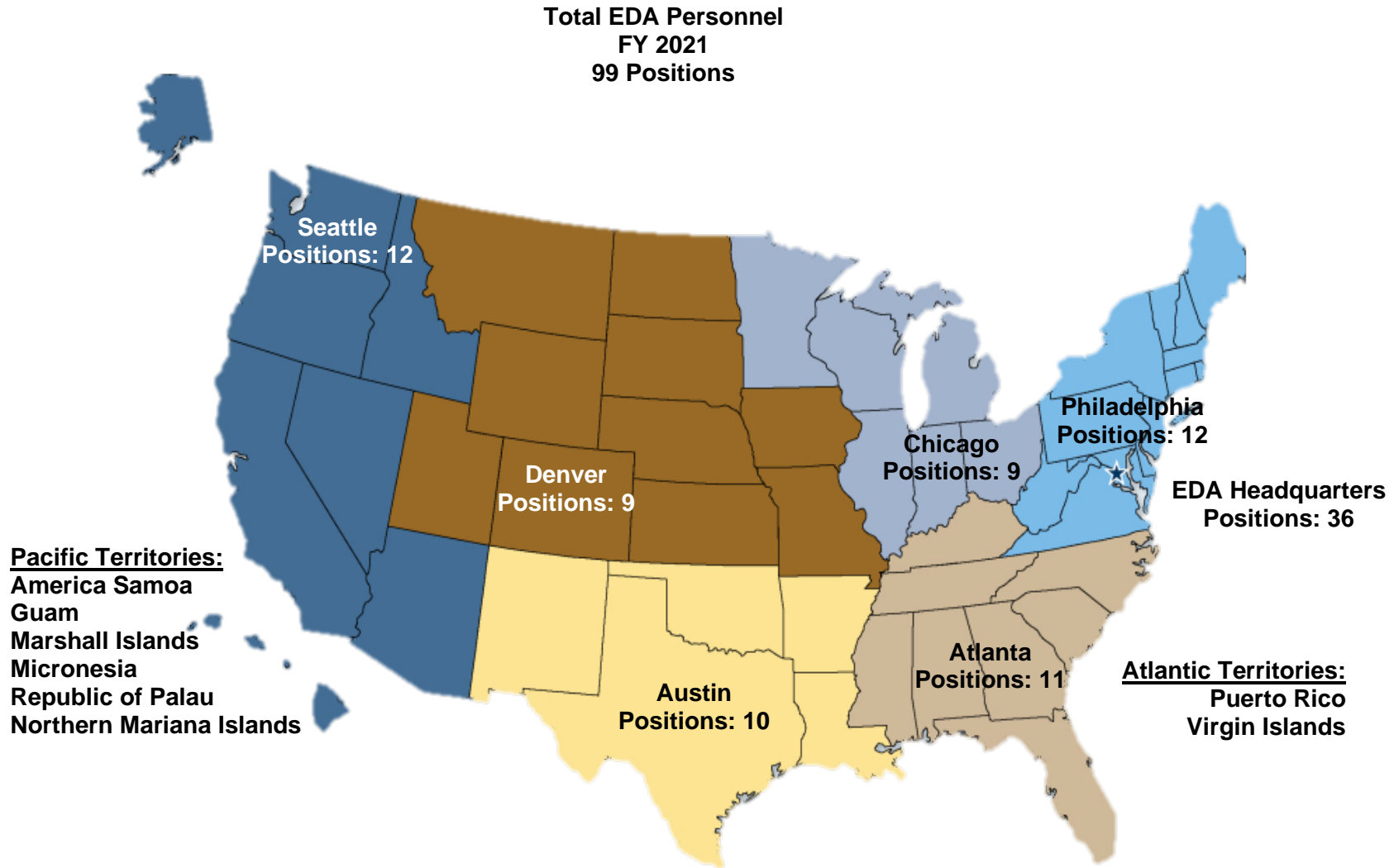
The close down plan includes the reduction of staff through involuntary separation and the transfer to a successor operating unit within DOC the monitoring and servicing of open grants and loans until their close-out date. EDA estimates it will take seven years to close the approximately 2,900 grants projected to be open at the end of 2020. This number includes disaster grants that will be awarded through 2021. There will be continued costs to the successor organization to monitor and service EDA’s over \$2.8 billion in grants until they are all closed. Those costs will decrease over time as the number of open grants decreases. After the grants are closed, there is post-close-out work that will need to occur through the useful life of the projects, often up to 20 years. Additional monitoring and final disposition work is required for years after the close-out of a grant to ensure the grantees continue to use facilities or infrastructure for its intended purpose and to release the government interest in the property (e.g., covenants, mortgages) at the expiration of the useful life. This monitoring will also need to be performed by the successor operating unit within the Department that assumes EDA’s grant and management functions.

Figure 1
EDA current staffing as of January 2020



*Excludes temp and term Positions funded from the 2018 disaster supplemental (P.L. 115-123) and the 2019 disaster supplemental (P.L. 116-20)

Figure 2
EDA planned staffing for FY 2021



*Excludes temp and term Positions funded from the 2018 disaster supplemental (P.L. 115-123) and the 2019 disaster supplemental (P.L. 116-20)

[THIS PAGE INTENTIONALLY LEFT BLANK]

**Department of Commerce
Economic Development Administration
Salaries and Expenses
PROGRAM CHANGE PERSONNEL DETAIL**

Activity: Operations and Administration (1-year)
 Program Change: Staff Decrease

<u>Full-time permanent Title</u>		<u>Grade</u>	<u>Number</u>	<u>Annual Salary</u>	<u>Total Salaries</u>
Various		Various	(106)	108,093.5	(11,457,909)
Total			(106)		(11,457,909)
Less lapse	25.00%		<u>0</u>		<u>2,864,477</u>
Total full-time permanent (FTE)			(106)		(8,593,432)
2020 Pay Adjustment (0.0%)					<u>0</u>
					(8,593,432)

Personnel Data Summary

Full-time Equivalent Employment (FTE)

Full-time permanent		0
Other than full-time permanent		<u>0</u>
Total FTE		0

Authorized Positions

Full-time permanent		(106)
Other than full-time permanent		<u>0</u>
Total Positions		(106)

[THIS PAGE INTENTIONALLY LEFT BLANK]

**Department of Commerce
Economic Development Administration
Salaries and Expenses
PROGRAM CHANGE DETAIL BY OBJECT CLASS
(Direct Obligations amounts in thousands)**

Object Class	2019 Actual	2020 Enacted	2021 Base	2021 Estimate	Increase/Decrease from 2021 Base
11.1 Full-time permanent compensation	19,576	20,760	21,462	14,775	(6,687)
11.3 Other than full-time permanent	0	0	0	0	0
11.5 Other personnel compensation	488	649	892	2,713	1,821
11.9 Total personnel compensation	20,063	21,409	22,354	17,488	(4,866)
12.1 Civilian personnel benefits	6,421	6,395	6,837	4,923	(1,914)
21 Travel and transportation of persons	700	725	728	495	(233)
22 Transportation of things	16	15	15	9	(6)
23 Rent, communications, and utilities					
23.1 Rental payments to GSA	2,482	2,687	2,954	2,954	0
23.2 Rental payments to others	0	0	0	0	0
23.3 Communications, utilities and misc. charges	365	581	582	353	(228)
24 Printing and reproduction	19	15	15	15	0
25 Other contractual services					
25.2 Other services from non-Federal sources	1,288	1,321	1,321	600	(721)
25.3 Other goods and services from Federal sources	7,010	7,009	8,151	4,679	(3,472)
25.7 Operations and maintenance of equipment	0	0	0	0	0
26 Supplies and materials	77	76	78	78	0
31 Equipment	0	0	0	0	0
43 Interest and Dividends	0	0	0	0	0
44 Refunds	0	0	0	0	0
99.9 Total obligations	38,441	40,234	43,035	31,593	(11,442)

[THIS PAGE INTENTIONALLY LEFT BLANK]

Department of Commerce
Economic Development Administration
Salaries and Expenses
SUMMARY OF REQUIREMENTS BY OBJECT CLASS
(Dollar amounts in thousands)

Object Class	2019 Actual	2020 Enacted	2021 Base	2021 Estimate	Increase/Decrease from 2021 Base
11.1 Full-time permanent	19,576	20,760	21,462	14,775	(6,687)
11.5 Other personnel compensation	488	649	892	2,713	1,821
11.9 Total personnel compensation	20,063	21,409	22,354	17,488	(4,866)
12.1 Civilian personnel benefits	6,421	6,395	6,837	4,923	(1,914)
21 Travel and transportation of persons	700	725	728	495	(233)
22 Transportation of things	16	15	15	9	(6)
23 Rent, communications and utilities					
23.1 Rental payments to GSA	2,482	2,687	2,954	2,954	0
23.2 Rental payments to others	0	0	0	0	0
23.3 Communications, utilities and misc. charges	365	581	582	353	(228)
24.0 Printing and reproduction	19	15	15	15	0
25 Other contractual services					
25.2 Other services from non-Federal sources	1,288	1,321	1,321	600	(721)
25.3 Other goods and services from Federal sources	7,010	7,009	8,151	4,679	(3,472)
25.7 Operations and maintenance of equipment	0	0	0	0	0
26 Supplies and materials	77	76	78	78	0
31 Equipment	0	0	0	0	0
99.9 Total Obligations	38,441	40,234	43,035	31,593	(11,442)
Less unobligated balance expiring, end of year	(560)	(267)	(267)	0	267
Total Budget Authority	39,000	40,500	43,301	31,593	(11,708)

Object Class	2019 Actual	2020 Enacted	2021 Base	2021 Estimate	Increase/Decrease from 2021 Base
Personnel Data					
Full-Time equivalent Employment:					
Full-time permanent	172	184	184	99	(85)
Other than full-time permanent	0	0	0	0	0
Total	172	184	184	99	(85)
Authorized Positions:					
Full-time permanent	205	205	205	99	(106)
Other than full-time permanent	0	0	0	0	0
Total	205	205	205	99	(106)

**Department of Commerce
Economic Development Administration
Salaries and Expenses
PROGRAM AND PERFORMANCE: DIRECT OBLIGATIONS
(Dollar amounts in thousands)**

Activity: Operations and Administration (no-year)

Line Item	2019 Actual		2020 Enacted		2021 Base		2021 Estimate		Increase/Decrease from 2021 Base		
	Personnel	Amount	Personnel	Amount	Personnel	Amount	Personnel	Amount	Personnel	Amount	
Operations and Administration (No-year)	Pos./BA	0	0	0	0	0	0	0	0	0	0
	FTE/Obl	0	1,313	0	2,941	0	2,941	0	0	0	(2,941)
Total	Pos./BA	0	0	0	0	0	0	0	0	0	0
	FTE/Obl	0	1,313	0	2,941	0	2,941	0	0	0	(2,941)

[THIS PAGE INTENTIONALLY LEFT BLANK]

Department of Commerce
Economic Development Administration
Salaries and Expenses (No Year)
SUMMARY OF REQUIREMENTS BY OBJECT CLASS
 (Dollar amounts in thousands)

Object Class	2019 Actual	2020 Enacted	2021 Base	2021 Estimate	Increase/Decrease from 2021 Base
11.1 Full-time permanent	0	1,000	1,000	0	(1,000)
11.5 Other personnel compensation	0	200	200	0	(200)
11.9 Total personnel compensation	0	1,200	1,200	0	(1,200)
12.1 Civilian personnel benefits	0	200	200	0	(200)
21 Travel and transportation of persons	0	0	0	0	0
22 Transportation of things	0	0	0	0	0
23 Rent, communications and utilities					
23.1 Rental payments to GSA	0	0	0	0	0
23.2 Rental payments to others	0	0	0	0	0
23.3 Communications, utilities and misc. charges	0	0	0	0	0
24.0 Printing and reproduction	0	0	0	0	0
25 Other contractual services					
25.2 Other services from non-Federal sources	0	620	620	0	(620)
25.3 Other goods and services from Federal sources	1,313	921	921	0	(921)
25.7 Operations and maintenance of equipment	0	0	0	0	0
26 Supplies and materials	0	0	0	0	0
31 Equipment	0	0	0	0	0
99.9 Total Obligations	1,313	2,941	2,941	0	(2,941)
Prior year recoveries	0	0	0	0	0
Prior year unobligated balance	424	829	829	268	(561)
Transfers from other accounts	1,718	2,380	2,380	0	(2,380)
Less unobligated balance, end of year	(829)	(268)	(268)	(268)	(0)
Total Budget Authority	0	0	0	0	0

Object Class	2019 Actual	2020 Enacted	2021 Base	2021 Estimate	Increase/Decrease from 2021 Base
Personnel Data					
Full-Time equivalent Employment:					
Full-time permanent	0	0	0	0	0
Other than full-time permanent	0	0	0	0	0
Total	0	0	0	0	0
Authorized Positions:					
Full-time permanent	0	0	0	0	0
Other than full-time permanent	0	0	0	0	0
Total	0	0	0	0	0

**Department of Commerce
Economic Development Administration
Salaries and Expenses
JUSTIFICATION OF PROPOSED LANGUAGE CHANGES**

FY 2021

This language is proposed for the orderly closedown of the Economic Development Administration and its grants and loans previously awarded.

SALARIES AND EXPENSES

For necessary expenses of the closure of the Economic Development Administration, including, but not limited to, ongoing administration, oversight and monitoring of grants and loans previously awarded by the Economic Development Administration, \$31,593,000.

[THIS PAGE INTENTIONALLY LEFT BLANK]

**Department of Commerce
Economic Development Administration
Salaries and Expenses
APPROPRIATION LANGUAGE AND CODE CITATIONS**

FY 2021

Salaries and Expenses

- 1 For necessary expenses of administering the economic development assistance programs as provided for by law,

42 U.S.C. 3214(c), 3231

42 U.S.C. 3214(c) - Authorizes the transfer of appropriated funds from other Federal agencies, if such funds are used for the purpose for which (and in accordance with the terms under which) the funds are specifically authorized and appropriated.

42 U.S.C. 3231 - Authorizes funds to be appropriated for economic development assistance programs to carry out 42 U.S.C. 3121 *et seq.*, through fiscal year 2008, to remain available until expended.

- 2 Authorization of appropriations for defense conversion activities,

42 U.S.C. 3232

42 U.S.C. 3232(a) - In addition to amounts made available under section 3231 of this title, there are authorized to be appropriated such sums as are necessary to carry out section 3149(c)(1) of this title, to remain available until expended.

42 U.S.C. 3232(b) - Funds made available under subsection (a) of this section may be used for activities including pilot projects for privatization of, and economic development activities for, closed or realigned military or Department of Energy installations.

- 3 Authorization of appropriations for disaster economic recovery activities,

42. U.S.C. 3233

42. U.S.C. 3233(a) - In addition to amounts made available under section 3231 of this title, there are authorized to be appropriated such sums as are necessary to carry out section 3149(c)(2) of this title, to remain available until expended.

42. U.S.C. 3233(b) - The Federal share of the cost of activities funded with amounts made available under subsection (a) of this section shall be up to 100 percent.

4 Funding for grants for planning and grants for administrative expenses,

42 U.S.C. 3234

Of the amounts made available under section 3231 of this title for each fiscal year, not less than \$27,000,000 shall be made available for grants provided under section 3143 of this title.

5 Provided, that these funds may be used to monitor projects approved pursuant to title I of the Public Works Employment Act of 1976, as amended,

42 U.S.C. 6710

42 U.S.C. 6710 - Authorized appropriations for the administration of the Local Public Works Capital Development and Investment Act of 1976.

6 Title II of the Trade Act of 1974, as amended, and

19 U.S.C. 2345 - Authorizes appropriations to carry out Trade Adjustment Assistance for Firms (TAAF).

Public Law No: 114-27, Trade Preferences Extension Act of 2015. Title IV of that Act, entitled the "Trade Adjustment Assistance Reauthorization Act of 2015" extends the authorization of appropriations for TAAF through fiscal year 2021.

7 The Community Emergency Drought Relief Act of 1977 (including monitoring and close-out),

42 U.S.C. 5184 note

42 U.S.C. 5184 note - Authorized appropriations to carry out those provisions of the Community Emergency Drought Relief Act of 1977.

8 For section 27 of the Stevenson-Wydler Technology Innovation Act of 1980 (15 U.S.C. 3722).

9 For section 28 of the Stevenson-Wydler Technology Innovation Act of 1980 (15 U.S.C. 3723).

**Department of Commerce
Economic Development Administration
Salaries and Expenses
PERIODICALS, PAMPHLETS, AND AUDIOVISUAL PRODUCTS**

	2019 Actual	2020 Enacted	2021 Estimate
Pamphlets	19.2	14.6	14.9
Total	19.2	14.6	14.9

Economic Development Administration (EDA) publications include the EDA Annual Report and a booklet to educate the Economic Development Districts, local and state governments, and stakeholders on their grant responsibilities as EDA closes down.

[THIS PAGE INTENTIONALLY LEFT BLANK]

**Department of Commerce
Economic Development Administration
Salaries and Expenses
AVERAGE GRADE AND SALARIES**

	2019 Actual	2020 Enacted	2021 Estimate
Average ES Grade	2.9	2.9	2.9
Average GS Grade	13.1	13.0	13.0
Average GS Salary	131.9	147.6	149.2

[THIS PAGE INTENTIONALLY LEFT BLANK]

**Department of Commerce
Economic Development Administration
Salaries and Expenses
IMPLEMENTATION STATUS OF GAO AND OIG RECOMMENDATIONS**

31 U.S.C. 720, as amended January 3, 2019, requires the head of a federal agency to submit a written statement of the actions taken or planned on Government Accountability Office (GAO) recommendations to the House and Senate Committees on Appropriations with the agency's first request for appropriations made more than 180 calendar days after the date of the report.

The Good Accounting Obligation in Government Act (GAO-IG Act), passed on January 3, 2019, (P.L. 115-414) requires each agency to include, in its annual budget justification, a report that identifies each public recommendation issued by GAO and the agency's office of the inspector general (OIG) which has remained unimplemented for one year or more from the annual budget justification submission date. In addition, the Act requires a reconciliation between the agency records and the IGs' Semiannual Report to Congress (SAR).

Section 1. Recommendations for which action plans were finalized since the last appropriations request.

Nothing to Report.

Section 2. Implementation of GAO public recommendations issued no less than one year ago that are designated by GAO as 'Open' or 'Closed-Unimplemented.'

Open Recommendation(s) the Department has decided not to implement.

Include information on all open recommendations made one year or more ago that the Department / bureau do not plan to implement. GAO recommendations are open until officially closed by GAO.

Report Number	GAO-16-271
Report Title	INNOVATIVE MANUFACTURING
Issue Date	2/4/2016
Recommendation Number	1
Recommendation	GAO recommends that EDA work with SBA and NIST to further identify any gaps in capital access that the program could fill, and conduct outreach to help target those gaps.
Reason for the Decision not to Implement	As of June 2019, the Economic Development Administration (EDA) had taken some action to work with the Small Business Administration (SBA) to identify gaps in capital access, develop marketing materials, and conduct outreach based on any gaps identified for the Federal Loan Guarantees for Innovative Technologies in Manufacturing program (ITM), as GAO recommended in February 2016. However, as GAO reported in February 2018, further progress was unlikely due to a perceived lack of demand among small- and medium-sized businesses for the program and competing regulatory priorities. In addition, as a result of recessions of the program's appropriations, a Commerce official said, there are no longer sufficient funds to implement the program. In June 2019, EDA officials confirmed that they do not foresee taking further action to implement the ITM program unless additional funds are appropriated to the program. Therefore, GAO is no longer assessing this action.

Open Recommendation(s) the Department plans to implement.

Include information on all open recommendations made one year or more ago that the Department / bureau plans to implement. GAO recommendations are open until officially closed by GAO.

Report Number	Report Title	Issue Date	Recommendation Number	Recommendation	Target Implementation Date	Closure Request Pending with GAO (Yes/No)	Clear Budget Implications (Yes/No)
12-819	Entrepreneurial Assistance	2012	7	Consistently collect information that would enable them to track the specific type of assistance programs provide and the entrepreneurs they serve and use this information to help administer their programs.	FY2020	No	No
12-819	Entrepreneurial Assistance	2012	11	Conduct more program evaluations to better understand why programs have not met performance goals and their overall effectiveness	N/A	Yes	No
12-930	Trade Adjustment Assistance: Measures, Data and Funding Formula	2012	1	Broaden the program's evaluation approach, for instance, by developing additional quantifiable outcome-oriented performance goals and measures for key program areas and conducting further analysis of the data to isolate the impact of the TAA for Firms program from other influences, such as economic trends.	FY2020	No	No
12-930	Trade Adjustment Assistance: Measures, Data and Funding Formula	2012	2	To improve the data available to manage and evaluate the TAA for Firms program, the Secretary of Commerce should develop a data system to consistently collect, maintain, and analyze sufficiently reliable and up-to-date data on program operations and participant firms.	TBD	No	No

Section 3. Implementation of OIG public recommendations issued no less than one year for which Final Action has not been Taken or Action Not Recommended has been Taken

Nothing to report.

Section 4. Discrepancies between this report and the semiannual reports submitted by the Commerce Office of Inspector General or reports submitted by the GAO

Nothing to report.

FY 2021 ANNUAL PERFORMANCE PLAN / REPORT (APPR) BACKUP

1) Summary

i) OVERVIEW

Since EDA's inception 53 years ago, EDA has led the federal economic development agenda by promoting innovation and competitiveness, preparing American regions for growth and success in the worldwide economy. EDA is proud of the investments it has made in economically distressed regions, based on their locally-driven strategies and needs, and the outcomes of those investments which spurred local innovation and entrepreneurship creating and saving jobs and leveraging private investments.

ii) MISSION STATEMENT

EDA will take actions to conduct the orderly close of the agency.

iii) CROSS-AGENCY PRIORITY GOALS

Due to the proposed elimination of EDA, it is not included in any cross-agency priority goals.

iv) STRATEGIC GOAL(S) AND OBJECTIVE(S)

Due to the proposed elimination of EDA, it is not included in the Department's strategic plan; however, EDA contributes to the specific strategic goals and objectives as noted below.

v) Tracking Progress on Strategic Objectives

Due to the proposed elimination of EDA, it is not included in the Department's strategic plan; however, EDA contributes to the specific strategic goals and objectives as noted below.

vi) Planned Actions for Achieving Strategic Objectives and FY 2021 Performance Targets

EDA did not request grant funding for 2020 and is not requesting grant funding for 2021. EDA will conduct activities necessary for the orderly closure of its operations. As such, EDA has not established performance targets for 2021.

2) Detailed Indicator Plans and Performance

i) Current / Recurring Indicators

Strategic Goals: 1 and 2	Accelerate American Leadership and Enhance Job Creation
--------------------------	---

Objectives: 1.2 2.3 2.4 2.5	Advance Innovation Promote Domestic Commerce and the U.S. Industrial Base Increase U.S. Exports Increase Inward Investment into the United States							
Indicator	Jobs Created/Retained - 9 year totals							
Category	Supporting (Non-Strategic Plan)							
Type	Output							
Description	The formula-driven calculation projects investment data at 3, 6, and 9 year intervals from the investment award. The formula is based on a study done by Rutgers University, which compiled and analyzed the performance of EDA construction investments after 9 years. This approach was reviewed and validated by third-party analysis conducted by Grant Thornton in 2008. Based on this formula and a review of EDA's historical results, EDA estimates that 40% of the 9-year projection would be realized after 3 years, 75% after 6 years, and 100% after 9 years.							
	FY 2014	FY 2015	FY 2016	FY 2017	FY 2018	FY 2019	FY 2020	FY 2021
Target	36,386	35,097	33,141	31,280	55,915	31,667	26,784	24,697
Actual	33,822	57,907	21,252	27,029	28,027	27,903		
Status	Met	Exceeded	Not Met	Not Met	Not Met	Not Met		
Trend	Variable							
Explanation (if not met in FY 2019)	The 2019 goal was set in 2010 using calculations that take into consideration regular EDAP appropriation levels, Bureau of Labor Statistics' Consumer Price Index (CPI), as well as the projected CPI, estimated by the Congressional Budget Office. These factors can result in target variations. Also, the targets, once set, are not changed over the years, so outliers and or errors result in no subsequent modification to the original target.							
Actions to be taken to correct not meeting target	None							
Adjustments to targets	Note that EDA's targets are calculated as the best estimate of future performance, based on prior performance and the most up-to-date data available. For a variety of reasons, including dynamic local economic circumstances, programmatic initiatives, and ongoing target calibration, the calculated targets are subject to fluctuate from one year to the next.							
Action(s) to achieve FY 2021 target	NA							
Notes	None							
Information Gaps	None							

Strategic Goals: 1 and 2	Accelerate American Leadership and Enhance Job Creation							
Objectives: 1.2 2.3 2.4 2.5	Advance Innovation Promote Domestic Commerce and the U.S. Industrial Base Increase U.S. Exports Increase Inward Investment into the United States							
Indicator	Jobs Created/Retained - 6 year totals							
Category	Supporting (Non-Strategic Plan)							
Type	Output							

Description	The formula-driven calculation projects investment data at 3, 6, and 9 year intervals from the investment award. The formula is based on a study done by Rutgers University, which compiled and analyzed the performance of EDA construction investments after 9 years. This approach was reviewed and validated by third-party analysis conducted by Grant Thornton in 2008. Based on this formula and a review of EDA's historical results, EDA estimates that 40% of the 9-year projection would be realized after 3 years, 75% after 6 years, and 100% after 9 years.							
	FY 2014	FY 2015	FY 2016	FY 2017	FY 2018	FY 2019	FY 2020	FY 2021
Target	15,640	27,958	15,834	13,392	12,348	9,082	10,093	13,729
Actual	12,486	19,526	24,101	18,114	36,456	16,082		
Status	Not Met	Not Met	Exceeded	Exceeded	Exceeded	Exceeded		
Trend	Variable							
Explanation (if not met in FY 2019)	NA							
Actions to be taken to correct not meeting target	None							
Adjustments to targets	Note that EDA's targets are calculated as the best estimate of future performance, based on prior performance and the most up-to-date data available. For a variety of reasons, including dynamic local economic circumstances, programmatic initiatives, and ongoing target calibration, the calculated targets are subject to fluctuate from one year to the next.							
Action(s) to achieve FY 2021 target	NA							
Notes	None							
Information Gaps	None							

Strategic Goals: 1 and 2	Accelerate American Leadership and Enhance Job Creation							
Objectives: 1.2 2.3 2.4 2.5	Advance Innovation Promote Domestic Commerce and the U.S. Industrial Base Increase U.S. Exports Increase Inward Investment into the United States							
Indicator	Jobs Created/Retained - 3 year totals							
Category	Supporting (Non-Strategic Plan)							
Type	Output							
Description	The formula-driven calculation projects investment data at 3, 6, and 9 year intervals from the investment award. The formula is based on a study done by Rutgers University, which compiled and analyzed the performance of EDA construction investments after 9 years. This approach was reviewed and validated by third-party analysis conducted by Grant Thornton in 2008. Based on this formula and a review of EDA's historical results, EDA estimates that 40% of the 9-year projection would be realized after 3 years, 75% after 6 years, and 100% after 9 years.							
	FY 2014	FY 2015	FY 2016	FY 2017	FY 2018	FY 2019	FY 2020	FY 2021
Target	5,357	4,939	3,633	4,037	7,322	7,779	7,436	8,464
Actual	6,538	12,151	4,109	5,510	10,706	7,166		
Status	Exceeded	Exceeded	Exceeded	Exceeded	Exceeded	Met		
Trend	Variable							
Explanation (if not met in FY 2019)	NA							

Actions to be taken to correct not meeting target	None
Adjustments to targets	None
Action(s) to achieve FY 2021 target	NA
Notes	None
Information Gaps	None

Strategic Goals: 1 and 2	Accelerate American Leadership and Enhance Job Creation							
Objectives: 1.2 2.3 2.4 2.5	Advance Innovation Promote Domestic Commerce and the U.S. Industrial Base Increase U.S. Exports Increase Inward Investment into the United States							
Indicator	Private Investment Leveraged - 9 year totals (in millions)							
Category	Supporting (Non-Strategic Plan)							
Type	Output							
Description	The formula-driven calculation projects investment data at 3, 6, and 9 year intervals from the investment award. The formula is based on a study done by Rutgers University, which compiled and analyzed the performance of EDA construction investments after 9 years. This approach was reviewed and validated by third-party analysis conducted by Grant Thornton in 2008. Based on this formula and a review of EDA's historical results, EDA estimates that 40% of the 9-year projection would be realized after 3 years, 75% after 6 years, and 100% after 9 years.							
	FY 2014	FY 2015	FY 2016	FY 2017	FY 2018	FY 2019	FY 2020	FY 2021
Target (\$M)	\$1,349	\$1,324	\$1,293	\$1,223	\$2,186	\$1,303	\$1,122	\$1,051
Actual (\$M)	\$2,958	\$3,711	\$2,783	\$4,233	\$3,830	\$4,775		
Status	Exceeded	Exceeded	Exceeded	Exceeded	Exceeded	Exceeded		
Trend	Variable							
Explanation (if not met in FY 2019)	NA							
Actions to be taken to correct not meeting target	None							
Adjustments to targets	None							
Action(s) to achieve FY 2021 target	NA							
Notes	None							
Information Gaps	None							

Strategic Goals: 1 and 2	Accelerate American Leadership and Enhance Job Creation							
Objectives: 1.2 2.3 2.4 2.5	Advance Innovation Promote Domestic Commerce and the U.S. Industrial Base Increase U.S. Exports Increase Inward Investment into the United States							
Indicator	Private Investment Leveraged - 6 year totals (in millions)							

Category	Supporting (Non-Strategic Plan)							
Type	Output							
Description	The formula-driven calculation projects investment data at 3, 6, and 9 year intervals from the investment award. The formula is based on a study done by Rutgers University, which compiled and analyzed the performance of EDA construction investments after 9 years. This approach was reviewed and validated by third-party analysis conducted by Grant Thornton in 2008. Based on this formula and a review of EDA's historical results, EDA estimates that 40% of the 9-year projection would be realized after 3 years, 75% after 6 years, and 100% after 9 years.							
	FY 2014	FY 2015	FY 2016	FY 2017	FY 2018	FY 2019	FY 2020	FY 2021
Target (\$M)	\$612	\$1,093	\$652	\$561	\$525	\$391	\$440	\$606
Actual (\$M)	\$1,744*	\$2,118*	\$1,003*	\$1,973**	\$3,226	\$1,673		
Status	Exceeded	Exceeded	Exceeded	Exceeded	Exceeded	Exceeded		
Trend	Variable							
Explanation (if not met in FY 2019)	NA							
Actions to be taken to correct not meeting target	NA							
Adjustments to targets	None							
Action(s) to achieve FY 2021 target	NA							
Notes	*The revisions to the actuals in FY2014, FY2015, and FY2016 are due to a formatting error that occurred during the submission of the FY2019 Congressional Budget Request. **The upward revision to the actuals in FY2017 is due to additional data that were collected after submission of the FY2019 Congressional Budget Request.							
Information Gaps	None							

Strategic Goals: 1 and 2	Accelerate American Leadership and Enhance Job Creation							
Objectives: 1.2 2.3 2.4 2.5	Advance Innovation Promote Domestic Commerce and the U.S. Industrial Base Increase U.S. Exports Increase Inward Investment into the United States							
Indicator	Private Investment Leveraged - 3 year totals (in millions)							
Category	Supporting (Non-Strategic Plan)							
Type	Output							
Description	The formula-driven calculation projects investment data at 3, 6, and 9 year intervals from the investment award. The formula is based on a study done by Rutgers University, which compiled and analyzed the performance of EDA construction investments after 9 years. This approach was reviewed and validated by third-party analysis conducted by Grant Thornton in 2008. Based on this formula and a review of EDA's historical results, EDA estimates that 40% of the 9-year projection would be realized after 3 years, 75% after 6 years, and 100% after 9 years.							
	FY 2014	FY 2015	FY 2016	FY 2017	FY 2018	FY 2019	FY 2020	FY 2021
Target (\$M)	\$224	\$210	\$156	\$176	\$323	\$350	\$350	\$403

Actual (\$M)	\$951	\$2,075	\$407	\$793	\$2,764	\$1,331		
Status	Exceeded	Exceeded	Exceeded	Exceeded	Exceeded	Exceeded		
Trend	Variable							
Explanation (if not met in FY 2019)	NA							
Actions to be taken to correct not meeting target	None							
Adjustments to targets	None							
Action(s) to achieve FY 2021 target	NA							
Notes	None							
Information Gaps	None							

Strategic Goals: 1 and 2	Accelerate American Leadership and Enhance Job Creation							
Objectives: 1.2 2.3 2.4 2.5	Advance Innovation Promote Domestic Commerce and the U.S. Industrial Base Increase U.S. Exports Increase Inward Investment into the United States							
Indicator	Percentage of Economic Development District (EDD) and Indian Tribes implementing economic development projects from the Comprehensive Economic Development Strategy (CEDS) that lead to private investment and jobs.							
Category	Supporting (Non-Strategic Plan)							
Type	Output							
Description	This measure provides an indication of whether the CEDS process is market based and whether EDA is helping to create an environment conducive to the creation and retention of higher skill, higher wage jobs. Research conducted on 2002 data established a baseline measure for subsequent years.							
	FY 2014	FY 2015	FY 2016	FY 2017	FY 2018	FY 2019	FY 2020	FY 2021
Target	95.0%	95.0%	95.0%	95.0%	95.0%	95.0%	95.0%	
Actual	92.4%	84.0%	80.0%	73.4%	33.6%	53.8%		
Status	Met	Not Met	Not Met	Not Met	Not Met	Not Met		
Trend	Stable							
Explanation (if not met in FY 2019)	NA							
Actions to be taken to correct not meeting target	None							
Adjustments to targets	None							
Action(s) to achieve FY 2021 target	EDA is developing new data collection instruments and performance metrics for all of its non-infrastructure programs. As part of this effort, EDA will create new performance indicators and targets given the trend presented.							
Notes	None							
Information Gaps	None							

Strategic Goals: 1 and 2	Accelerate American Leadership and Enhance Job Creation							
Objectives: 1.2 2.3 2.4 2.5	Advance Innovation Promote Domestic Commerce and the U.S. Industrial Base Increase U.S. Exports Increase Inward Investment into the United States							
Indicator	Percentage of sub-state jurisdiction members actively participating in the Economic Development District (EDD) program.							
Category	Supporting (Non-Strategic Plan)							
Type	Output							
Description	EDDs generally consist of three or more counties that are considered member jurisdictions. Sub-state jurisdiction participation indicates the District's responsiveness to the area it serves and shows that the services it provides are of value. Active participation was defined as either attendance at meetings or financial support of the EDD during the reporting period. Sub-state jurisdiction members are independent units of government (cities, counties, etc.) and eligible entities substantially associated with economic development, as set forth by the District's by laws or alternate enabling document.							
	FY 2014	FY 2015	FY 2016	FY 2017	FY 2018	FY 2019	FY 2020	FY 2021
Target	89.0%	89.0%	89.0%	89.0%	89.0%	89.0%	89.0%	
Actual	80.3%	85.3%	86.2%	91.9%	84.5%	83.6%		
Status	Met	Met	Met	Exceeded	Met	Met		
Trend	Stable							
Explanation (if not met in FY 2019)	NA							
Actions to be taken to correct not meeting target	None							
Adjustments to targets	None							
Action(s) to achieve FY 2021 target	EDA is developing new data collection instruments and performance metrics for all of its non-infrastructure programs. As part of this effort, EDA will create new performance indicators and targets.							
Notes	None							
Information Gaps	None							

Strategic Goals: 1 and 2	Accelerate American Leadership and Enhance Job Creation							
Objectives: 1.2 2.3 2.4 2.5	Advance Innovation Promote Domestic Commerce and the U.S. Industrial Base Increase U.S. Exports Increase Inward Investment into the United States							
Indicator	Percentage of University Center Clients Taking Action as a Result of the Assistance Facilitated by the University Center (UC).							
Category	Supporting (Non-Strategic Plan)							
Type	Output							
Description	EDA funds UCs to provide technical assistance and specialized services (e.g., feasibility studies, marketing research, and technology transfer) to local officials and communities. UCs develop client profiles and report findings to EDA, which evaluates the performance of each center. "Taking action as a result of the assistance facilitated" means to implement an aspect of the technical assistance provided by the UC in one of several areas: economic development initiatives and training session development; linkages to crucial resources; economic development planning, etc.							

	FY 2014	FY 2015	FY 2016	FY 2017	FY 2018	FY 2019	FY 2020	FY 2021
Target	75.0%	75.0%	75.0%	75.0%	75.0%	75.0%	75.0%	75.0%
Actual	73.2%	79.0%	77.2%	93.7%	89.8%	57.1%		
Status	Met	Exceeded	Exceeded	Exceeded	Exceeded	Not Met		
Trend	Stable							
Explanation (if not met in FY 2019)	EDA is developing new data collection instruments and performance metrics for all of its non-infrastructure programs. As part of this effort, EDA will create new performance indicators and targets							
Actions to be taken to correct not meeting target	None							
Adjustments to targets	None							
Action(s) to achieve FY 2021 target	NA							
Notes	None							
Information Gaps	None							

Strategic Goals: 1 and 2	Accelerate American Leadership and Enhance Job Creation							
Objectives: 1.2 2.3 2.4 2.5	Advance Innovation Promote Domestic Commerce and the U.S. Industrial Base Increase U.S. Exports Increase Inward Investment into the United States							
Indicator	Percentage of Those Actions Taken by University Center (UC) Clients that Achieved the Expected Results.							
Category	Supporting (Non-Strategic Plan)							
Type	Output							
Description	This measure is a follow up to the previous measure: "Percentage of UC clients taking action as a result of the assistance facilitated by the UC." This measure determines if the assistance provided by the UC is market based and results in desired outcomes. UCs develop client profiles and report to EDA, which will evaluate and verify the performance of each UC once every three years.							
	FY 2014	FY 2015	FY 2016	FY 2017	FY 2018	FY 2019	FY 2020	FY 2021
Target	80.0%	83.0%	83.0%	83.0%	83.0%	83.0%	83.0%	83.0%
Actual	91.7%	82.1%	90%	89.4%	87.4%	77.8%		
Status	Exceeded	Met	Exceeded	Exceeded	Exceeded	Met		
Trend	Stable							
Explanation (if not met in FY 2019)	NA							
Actions to be taken to correct not meeting target	None							
Adjustments to targets	None							
Action(s) to achieve FY 2021 target	NA							
Notes	None							
Information Gaps	None							

Strategic Goals: 1 and 2	Accelerate American Leadership and Enhance Job Creation							
Objectives: 1.2 2.3 2.4 2.5	Advance Innovation Promote Domestic Commerce and the U.S. Industrial Base Increase U.S. Exports Increase Inward Investment into the United States							
Indicator	Percentage of Trade Adjustment Assistance Center (TAAC) clients taking action as a result of the assistance facilitated by the TAAC.							
Category	Supporting (Non-Strategic Plan)							
Type	Output							
Description	Eleven EDA funded TAACs work with U.S. firms and industries that have been adversely impacted as a result of increased imports of similar or competitive goods to identify specific actions to improve each firm's competitive position in world markets. "Taking action as a result of the assistance facilitated" means to implement an aspect of the Trade Adjustment Assistance provided by the TAAC. The TAACs provide three main types of assistance: help in preparing petitions for certification, analysis of the firm's strengths and weaknesses and development of an adjustment proposal, and in depth assistance for implementation of the recovery strategy as set forth in the adjustment proposal.							
	FY 2014	FY 2015	FY 2016	FY 2017	FY 2018	FY 2019	FY 2020	FY 2021
Target	90.0%	90.0%	90.0%	90.0%	90.0%	90.0%	90.0%	90.0%
Actual	77.8%	68.5%	75.7%	81.4%	87.7%	89.5%		
Status	Not Met	Not Met	Not Met	Met	Met	Met		
Trend	Stable							
Explanation (if not met in FY 2019)	NA							
Actions to be taken to correct not meeting target	None							
Adjustments to targets	None							
Action(s) to achieve FY 2021 target	NA							
Notes	None							
Information Gaps	None							

Strategic Goals: 1 and 2	Accelerate American Leadership and Enhance Job Creation							
Objectives: 1.2 2.3 2.4 2.5	Advance Innovation Promote Domestic Commerce and the U.S. Industrial Base Increase U.S. Exports Increase Inward Investment into the United States							
Indicator	Percentage of those actions taken by TAAC clients that achieved the expected results.							
Category	Supporting (Non-Strategic Plan)							
Type	Output							

Description	This is a follow up to the previous measure: "Percentage of TAAC clients taking action as a result of the assistance facilitated by the TAAC." This measure will determine if the assistance facilitated by the TAACs is market based and results in desired outcomes. The centers conduct client surveys and report findings to EDA.							
	FY 2014	FY 2015	FY 2016	FY 2017	FY 2018	FY 2019	FY 2020	FY 2021
Target	95.0%	95.0%	95.0%	95.0%	95.0%	95.0%	95.0%	95.0%
Actual	100.0%	99.5%	97.1%	96.7%	95.2%	90.4%		
Status	Exceeded	Exceeded	Exceeded	Exceeded	Exceeded	Met		
Trend	Stable							
Explanation (if not met in FY 2019)	NA							
Actions to be taken to correct not meeting target	None							
Adjustments to targets	None							
Action(s) to achieve FY 2021 target	NA							
Notes	None							
Information Gaps	None							

Strategic Goal 1	Accelerate American Leadership							
Objective #1.2	Advance Innovation							
Indicator	Number of economic development grants made to communities and regions to help build the capacity to support the manufacturing-related activities and needs of businesses.							
Category	Supporting (Strategic Plan)							
Type	Input							
Description	This performance indicator measures the number of EDA grants made to communities and regions to help build the capacity to support the manufacturing-related activities and needs of businesses.							
	FY 2014	FY 2015	FY 2016	FY 2017	FY 2018	FY 2019	FY 2020	FY 2021
Target				NA	98	122	108	
Actual				109	136	120		
Status				NA	Exceeded	Met		
Trend	New Indicator – not enough data.							
Action(s) to achieve FY 2021 target	EDA is not requesting grant funding for 2021 and will continue the orderly closure of its operations. As such, EDA has not established performance targets for this indicator for FY 2021.							
Notes	EDA's targets are calculated as the best estimate of future performance, based on prior performance and the most up-to-date data available. For a variety of reasons, including dynamic local economic circumstances, programmatic initiatives, and ongoing target calibration, the calculated targets are subject to fluctuate from one year to the next. The indicator above was developed in accordance with the proposed 2018-22 Strategic Plan and measured for the first time in 2018. The targets for 2018 and for 2019 were determined based on actual results from 2017 and 2018, respectively.							
Information Gaps	None							

Strategic Goal 1	Accelerate American Leadership							
------------------	--------------------------------	--	--	--	--	--	--	--

Objective #1.2	Advance Innovation							
Indicator	Dollar amount of economic development grants made to communities and regions to help build the capacity to support the manufacturing-related activities and needs of businesses.							
Category	Supporting (Strategic Plan)							
Type	Input							
Description	This performance indicator measures dollar amount of EDA grants made to communities and regions to help build the capacity to support the manufacturing-related activities and needs of businesses.							
	FY 2014	FY 2015	FY 2016	FY 2017	FY 2018	FY 2019	FY 2020	FY 2021
Target (\$M)				NA	\$86.6	\$136.8	\$136.4	
Actual (\$M)				\$96.2	\$151	\$151.6		
Status				NA	Exceeded	Exceeded		
Trend	New Indicator – not enough data.							
Action(s) to achieve FY 2021 target	EDA is not requesting grant funding for 2021 and will continue the orderly closure of its operations. As such, EDA has not established performance targets for this indicator for FY 2021.							
Notes	EDA's targets are calculated as the best estimate of future performance, based on prior performance and the most up-to-date data available. For a variety of reasons, including dynamic local economic circumstances, programmatic initiatives, and ongoing target calibration, the calculated targets are subject to fluctuate from one year to the next. The indicator above was developed in accordance with the proposed 2018-22 Strategic Plan and measured for the first time in 2018. The targets for 2018 and for 2019 were determined based on actual results from 2017 and 2018, respectively.							
Information Gaps	None							

Strategic Goal 2	Enhance Job Creation							
Objective #2.3	Promote Domestic Commerce and the U.S. Industrial Base							
Indicator	Number economic development grants made to communities and regions to help build the capacity to support the innovation-related activities and needs of businesses.							
Category	Supporting (Strategic Plan)							
Type	Input							
Description	This performance indicator measures the number of EDA grants made to communities and regions to help build community and regional capacity for entrepreneurship and innovation.							
	FY 2014	FY 2015	FY 2016	FY 2017	FY 2018	FY 2019	FY 2020	FY 2021
Target				NA	311	211	254	
Actual				345	234	282		
Status				NA	Not Met	Exceeded		
Trend	New Indicator – not enough data.							
Action(s) to achieve FY 2021 target	EDA is not requesting grant funding for 2021 and will continue the orderly closure of its operations. As such, EDA has not established performance targets for this indicator for FY 2021.							
Notes	EDA's targets are calculated as the best estimate of future performance, based on prior performance and the most up-to-date data available. For a variety of reasons, including dynamic local economic circumstances, programmatic initiatives, and ongoing target calibration, the calculated targets are subject to fluctuate from one year to the next. The indicator above was developed in accordance with the proposed 2018-22 Strategic Plan and measured for the first time in 2018. The targets for 2018 and for 2019 were determined based on actual results from 2017 and 2018, respectively.							
Information Gaps	None							

Indicator(s) being replaced	None.							
Strategic Goal 2	Enhance Job Creation							
Objective #2.3	Promote Domestic Commerce and the U.S. Industrial Base							
Indicator	Dollar amount of economic development grants made to communities and regions to help build the capacity to support the innovation-related activities and needs of businesses.							
Category	Supporting (Strategic Plan)							
Type	Input							
Description	This performance indicator measures the dollar amount of EDA grants made to communities and regions to help build community and regional capacity for entrepreneurship and innovation.							
	FY 2014	FY 2015	FY 2016	FY 2017	FY 2018	FY 2019	FY 2020	FY 2021
Target (\$M)				NA	\$137.8	\$110.6	\$160.4	
Actual (\$M)				\$153.2	\$122.9	\$178.2		
Status				NA	Not Met	Exceeded		
Trend	New Indicator – not enough data.							
Action(s) to achieve FY 2021 target	EDA is not requesting grant funding for 2021 and will continue the orderly closure of its operations. As such, EDA has not established performance targets for this indicator for FY 2021.							
Notes	EDA's targets are calculated as the best estimate of future performance, based on prior performance and the most up-to-date data available. For a variety of reasons, including dynamic local economic circumstances, programmatic initiatives, and ongoing target calibration, the calculated targets are subject to fluctuate from one year to the next. The indicator above was developed in accordance with the proposed 2018-22 Strategic Plan and measured for the first time in 2018. The targets for 2018 and for 2019 were determined based on actual results from 2017 and 2018, respectively.							
Information Gaps	None							

Strategic Goal 2	Enhance Job Creation							
Objective #2.4	Increase U.S. Exports							
Indicator	Number of economic development grants made to communities and regions to help build the capacity to support the export-related activities and needs of businesses.							
Category	Supporting (Strategic Plan)							
Type	Input							
Description	This performance indicator measures the number of EDA grants made to communities and regions to help build the capacity to support the export-related activities and needs of businesses.							
	FY 2014	FY 2015	FY 2016	FY 2017	FY 2018	FY 2019	FY 2020	FY 2021
Target				NA	68	84	51	
Actual				75	93	57		
Status				NA	Exceeded	Not Met		
Trend	New Indicator – not enough data.							
Action(s) to achieve FY 2021 target	EDA is not requesting grant funding for 2021 and will continue the orderly closure of its operations. As such, EDA has not established performance targets for this indicator for FY 2021.							

Notes	EDA's targets are calculated as the best estimate of future performance, based on prior performance and the most up-to-date data available. For a variety of reasons, including dynamic local economic circumstances, programmatic initiatives, and ongoing target calibration, the calculated targets are subject to fluctuate from one year to the next. The indicator above was developed in accordance with the proposed 2018-22 Strategic Plan and measured for the first time in 2018. The targets for 2018 and for 2019 were determined based on actual results from 2017 and 2018, respectively.
Information Gaps	None

Strategic Goal 2	Enhance Job Creation							
Objective #2.4	Increase U.S. Exports							
Indicator	Dollar amount of economic development grants made to communities and regions to help build the capacity to support the export-related activities and needs of businesses.							
Category	Supporting (Strategic Plan)							
Type	Input							
Description	This performance indicator measures the dollar amount of EDA grants made to made to communities and regions to help build the capacity to support the export-related activities and needs of businesses.							
	FY 2014	FY 2015	FY 2016	FY 2017	FY 2018	FY 2019	FY 2020	FY 2021
Target				NA	\$ 75.5	\$96.2	\$68.2	
Actual				\$83.8	\$106.8	\$75.7		
Status				NA	Exceeded	Not Met		
Trend	New Indicator – not enough data.							
Action(s) to achieve FY 2021 target	EDA is not requesting grant funding for 2021 and will continue the orderly closure of its operations. As such, EDA has not established performance targets for this indicator for FY 2021.							
Notes	EDA's targets are calculated as the best estimate of future performance, based on prior performance and the most up-to-date data available. For a variety of reasons, including dynamic local economic circumstances, programmatic initiatives, and ongoing target calibration, the calculated targets are subject to fluctuate from one year to the next. The indicator above was developed in accordance with the proposed 2018-22 Strategic Plan and measured for the first time in 2018. The targets for 2018 and for 2019 were determined based on actual results from 2017 and 2018, respectively.							
Information Gaps	None							

Strategic Goal 2	Enhance Job Creation							
Objective #2.5	Increase Inward Investment into the United States							
Indicator	Number of economic development grants made to communities and regions to help build the capacity to attract FDI.							
Category	Supporting (Strategic Plan)							
Type	Input							
Description	This performance indicator measures the number of EDA grants which help communities and regions be better positioned for FDI.							
	FY 2014	FY 2015	FY 2016	FY 2017	FY 2018	FY 2019	FY 2020	FY 2021
Target				NA	31	35	35	
Actual				34	39	39		
Status				NA	Exceeded	Exceeded		
Trend	New Indicator – not enough data.							
Action(s) to achieve FY 2021 target	EDA is not requesting grant funding for 2021 and will continue the orderly closure of its operations. As such, EDA has not established performance targets for this indicator for FY 2021.							

Notes	EDA's targets are calculated as the best estimate of future performance, based on prior performance and the most up-to-date data available. For a variety of reasons, including dynamic local economic circumstances, programmatic initiatives, and ongoing target calibration, the calculated targets are subject to fluctuate from one year to the next. The indicator above was developed in accordance with the proposed 2018-22 Strategic Plan and measured for the first time in 2018. The targets for 2018 and for 2019 were determined based on actual results from 2017 and 2018, respectively.
Information Gaps	None

Strategic Goal 2	Enhance Job Creation							
Objective #2.5	Increase Inward Investment into the United States							
Indicator	Dollar amount of economic development grants made to communities and regions to help build the capacity to attract FDI.							
Category	Supporting (Strategic Plan)							
Type	Input							
Description	This performance indicator measures the dollar amount of EDA grants which help communities and regions be better positioned for FDI.							
	FY 2014	FY 2015	FY 2016	FY 2017	FY 2018	FY 2019	FY 2020	FY 2021
Target (\$M)				NA	\$34.5	\$43.6	\$63.2	
Actual (\$M)				\$38.4	\$48.4	\$70.2		
Status				NA	Exceeded	Exceeded		
Trend	New Indicator – not enough data.							
Action(s) to achieve FY 2021 target	EDA is not requesting grant funding for 2021 and will continue the orderly closure of its operations. As such, EDA has not established performance targets for this indicator for FY 2021.							
Notes	EDA's targets are calculated as the best estimate of future performance, based on prior performance and the most up-to-date data available. For a variety of reasons, including dynamic local economic circumstances, programmatic initiatives, and ongoing target calibration, the calculated targets are subject to fluctuate from one year to the next. The indicator above was developed in accordance with the proposed 2018-22 Strategic Plan and measured for the first time in 2018. The targets for 2018 and for 2019 were determined based on actual results from 2017 and 2018, respectively.							
Information Gaps	None							

ii) Proposed New Indicators

None

iii) Other Indicators

None

iv) Non-Recurring Indicators

None